



**AGENDA**  
**Washoe County Open Space and Regional Parks Commission**  
**Washoe County Commission Chambers**  
**1001 E 9<sup>th</sup> Street, Reno NV**  
**Tuesday, June 6, 2017**  
**2:30 p.m.**

Washoe County  
 Community Services  
 Department  
 1001 E 9<sup>th</sup> Street  
 Reno, NV 89512  
 Tel: (775) 823-6500  
 Fax: (775) 829-8014

**Commissioners:**  
 Nathan Daniel – Chair  
 Doug Doolittle – Vice  
 Chair  
 Anne Buckley  
 Charles Guffey  
 Thomas Guinn  
 Austin Olson  
 Allan Sheakley

**County Commission  
 Liaison:**  
 Kitty Jung

**Staff:**  
 Dave Solaro, Director of  
 Community Services

Eric Crump, Director of  
 Operations Division

Parks Operations  
 Superintendent  
 Colleen Wallace Barnum

**Our Mission...**  
 To provide exceptional  
 parks, open space and  
 recreational  
 opportunities while  
 preserving our natural,  
 historical and cultural  
 resources

PURSUANT TO NRS 241.020, PLEASE BE ADVISED THAT THE AGENDA FOR THE OPEN SPACE & REGIONAL PARK COMMISSION MEETING HAS BEEN POSTED AT THE FOLLOWING LOCATIONS: WASHOE COUNTY ADMINISTRATION BUILDING (1001 E 9<sup>TH</sup> STREET); WASHOE COUNTY COURTHOUSE – SECOND JUDICIAL DISTRICT COURT (75 COURT STREET); AND WASHOE COUNTY CENTRAL LIBRARY (301 SOUTH CENTER STREET); [www.washoecountyparks.com](http://www.washoecountyparks.com); <https://notice.nv.gov>.

**NOTE:** Items on the agenda may be taken out of order; combined with other items; removed from the agenda; moved to the agenda of another later meeting; or may be voted on in a block. Items with a specific time designation will not be heard prior to the stated time, but may be heard later.

Reasonable efforts will be made to assist and accommodate physically handicapped persons desiring to attend the meeting. Please call (775) 823-6500 in advance so that arrangements may be conveniently made.

**Appeal Procedure for Discretionary Permits for Active Recreation Uses:** Discretionary permit decisions for Active Recreational Use rendered by the Open Space and Regional Parks Commission are appealable to the Board of County Commissioners. If you disagree with the decision of the Open Space and Regional Parks Commission and you want to appeal its action, call the Community Services staff immediately, at 328-6100. You will be informed of the appeal procedure, application fee, and the time in which you must act. Appeal periods vary from seven (7) to fifteen (15) days, depending on the type of application.

Supporting materials are available to the public at 1001 E 9<sup>th</sup> Street, Bldg. A, 2<sup>nd</sup> Floor, in Reno, Nevada, 89512. Ms. Joanna Schultz, Office Support Specialist, is the person designated by the Washoe County Open Space and Regional Parks Commission to respond to requests for supporting materials. Ms. Schultz is located at the 1001 E 9<sup>th</sup> Street address and may be reached by telephone at (775) 823-6500 or at [jschultz@washoecounty.us](mailto:jschultz@washoecounty.us).

**Time Limits.** Public comments are welcomed during the Public Comment periods for all matters, whether listed on the agenda or not, and are limited to three minutes per person. Additionally, public comment of three minutes per person will be heard during individual action items on the agenda. Persons are invited to submit comments in writing on the agenda items and/or attend and make comment on that item at the Commission meeting. Persons may not allocate unused time to other speakers.

**Responses to Public Comments.** The Commission can deliberate or take action only if a matter has been listed on an agenda properly posted prior to the meeting. During the public comment period, speakers may address matters listed or not listed on the published agenda. The Open Meeting Law does not expressly prohibit responses to public comments by the Commission. However, responses from Commissioners to unlisted public comment topics could become deliberation on a matter without notice to the public. On the advice of legal counsel and to ensure the public has notice of all matters the Commission will consider, Commissioners may choose not to respond to public comments, except to correct factual inaccuracies, ask for County staff action or to ask that a matter be listed on a future agenda. The Commission may do this either during the public comment item or during the following item: “\*Commissioner’s Comments: (This item limited to announcements or topics/issues proposed for future workshops/agendas)”.

All items numbered or lettered below are hereby designated **for possible action** as if the words “for possible action” were written next to each item (NRS 241.020). An item listed with asterisk (\*) next to it is an item for which no action will be taken.

- \*1. Roll Call
- \*2. Pledge of Allegiance



**AGENDA**  
**Washoe County Open Space and Regional Parks Commission**  
**Washoe County Commission Chambers**  
**1001 E 9<sup>th</sup> Street, Reno NV**  
**Tuesday, June 6, 2017**  
**2:30 p.m.**

---

Washoe County  
Community Services  
Department  
1001 E 9<sup>th</sup> Street  
Reno, NV 89512  
Tel: (775) 823-6500  
Fax: (775) 829-8014

**Commissioners:**

Nathan Daniel – Chair  
Doug Doolittle – Vice  
Chair  
Anne Buckley  
Charles Guffey  
Thomas Guinn  
Austin Olson  
Allan Sheakley

**County Commission**

**Liaison:**

Kitty Jung

**Staff:**

Dave Solaro, Director of  
Community Services

Eric Crump, Director of  
Operations Division

Parks Operations  
Superintendent  
Colleen Wallace Barnum

***Our Mission...***

To provide exceptional  
parks, open space and  
recreational  
opportunities while  
preserving our natural,  
historical and cultural  
resources

- \*3. Public Comments: Comments heard under this item will be limited to three minutes per person and may pertain to matters both on and off the Commission agenda. The Commission will also hear public comment during individual action items, with comment limited to three minutes per person. Comments are to be made to the Commission as a whole.
4. Approval of the Agenda for the Open Space and Regional Parks Commission Meeting of June 6, 2017
5. Approval of the Minutes for the Open Space and Regional Parks Commission Meeting of April 4, 2017
- \*6. Acknowledgement and recognition of Park Operations staff for their outstanding service and contributions to Washoe County
- \*7. Presentation by Nick Johnson, Project Manager for NDOT, on an update on the SR 28 Tahoe East Shore Trail, aka Stateline Bikeway
8. Presentation by the May Arboretum Society on the Chinese Lantern Festival 2018
- \*9. Washoe County Manager's proposed budget
10. Review, discussion and possible recommendation to the Board of County Commissioners regarding possible purchase of a permanent diversion easement [totaling 12,275± square feet] by Truckee Meadows Water Authority on APN#150-492-20, commonly known as Whites Creek Open Space, at the appraised value of \$3,100
11. Discussion and possible appointment of a Washoe County Open Space and Regional Parks Commissioner to the Working Group for the development of a smoke free park policy
- \*12. Program/Park of the Month: *Phase II Irrigation Project at Rancho San Rafael Regional Park*
- \*13. Parks Reports
  - Park District Reports to include staffing, activities, upcoming events at Regional Parks and Open Space parks
  - May Center Report to include staffing, activities, upcoming events and visitation at the Wilbur D. May Arboretum and Museum
  - Volunteer Service Report to include volunteer projects, programs and statistics
  - Park Planning report to include the highlights of current planning and construction projects, including community and regional parks, trails, interpretive features, natural resource management efforts, grants, State Question 1 and inter-jurisdictional/regional open space planning issues

WASHOE COUNTY IS AN EQUAL OPPORTUNITY EMPLOYER

[www.washoecountyparks.com](http://www.washoecountyparks.com)



**AGENDA**  
**Washoe County Open Space and Regional Parks Commission**  
**Washoe County Commission Chambers**  
**1001 E 9<sup>th</sup> Street, Reno NV**  
**Tuesday, June 6, 2017**  
**2:30 p.m.**

---

Washoe County  
Community Services  
Department  
1001 E 9<sup>th</sup> Street  
Reno, NV 89512  
Tel: (775) 823-6500  
Fax: (775) 829-8014

**Commissioners:**

Nathan Daniel – Chair  
Doug Doolittle – Vice  
Chair  
Anne Buckley  
Charles Guffey  
Thomas Guinn  
Austin Olson  
Allan Sheakley

**County Commission**

**Liaison:**

Kitty Jung

**Staff:**

Dave Solaro, Director of  
Community Services

Eric Crump, Director of  
Operations Division

Parks Operations  
Superintendent  
Colleen Wallace Barnum

***Our Mission...***

To provide exceptional  
parks, open space and  
recreational  
opportunities while  
preserving our natural,  
historical and cultural  
resources

- Golf Report to include updates on course conditions, rounds of play, financials, and current projects
- \*14. Director's Report to include updates on Board of County Commissioners actions, future meeting locations/Commissioner field trips, community sponsorship requests, department updates and community partnerships
- \*15. Commissioner's Comments: (This item limited to announcements or topics/issues proposed for future workshops/agendas)
- \*16. Public Comments: Comments heard under this item will be limited to three minutes per person and may pertain to matters both on and off the Commission agenda. The Commission will also hear public comment during individual action items, with comment limited to three minutes per person. Comments are to be made to the Commission as a whole.
- \*17. Adjournment

## MINUTES

### Washoe County Open Space and Regional Parks Commission April 4, 2017

Commissioner Nathan Daniel called the meeting to order at 2:30 p.m.

#### 1. **Roll Call**

**Members Present:** Austin Olson, Nathan Daniel, Doug Doolittle, Thomas Guinn, Anne Buckley and Al Sheakley. Charles Guffey had an excused absence.

**Board of County Commissioner Liaison:** Kitty Jung

**Staff Present:** Deputy District Attorney Leslie Admirand, Eric Crump, Colleen Wallace Barnum, Jeff Patterson, Bryan Harrower, Aurora Ayala, Samantha Szesciorka and Joanna Schultz

#### 2. **Pledge of Allegiance**

#### 3. **Public Comments**

Cathy Brandhorst discussed issues of importance to herself.

#### 4. **Approval of the Agenda for the Open Space and Regional Parks Commission Meeting of April 4, 2017**

Motion by Commissioner Guinn to Approve the Agenda for the Open Space and Regional Parks Commission Meeting of April 4, 2017. Second by Commissioner Olsen. Motion carried

#### 5. **Approval of the Minutes for the Open Space and Regional Parks Commission Meeting of March 7, 2017**

Motion by Commissioner Doolittle to Approve the Minutes for the Open Space and Regional Parks Commission Meeting of March 7, 2017. Second by Commissioner Olsen. Motion carried

#### 6. **Acknowledgement and recognition of Park Operations staff for their outstanding service and contributions to Washoe County**

None

#### 7. **Introduction of new District Managers Bryan Harrower and Jeff Patterson and new reservations staff member Aurora "Rudy" Ayala**

Colleen Wallace Barnum, Park Operations Superintendent, introduced Bryan Harrower. Parks had a few retirements in December and January that opened up opportunities for new positions. Mr. Harrower is the new District Manager for the north region that is stationed out of Rancho San Rafael Regional Park and is replacing Andy Mink. He has been a Park Ranger since 2005, but has been part of Washoe County since 1996 as a Seasonal Lifeguard. Mr. Harrower has a degree in Natural Resource Management from UNR and will be a great addition to Operations as a manager.

Mr. Harrower thanked Ms. Wallace Barnum for the opportunity. He has lived and worked here for the vast majority of his life and is looking forward to many more years.

Ms. Wallace Barnum introduced Jeff Patterson. Mr. Patterson is the new District Manager for the south region stationed out of Bartley Ranch Regional Park. He has been a Park Ranger since 2013 and a seasonal for Washoe Golf Course. Mr. Patterson had worked for the City of Reno for 10 years as the Park/River Ranger along the Truckee River. He has a degree in recreation from UNR.

Mr. Patterson thanked Ms. Wallace Barnum, as well as the Commission for their advocacy, as it helps them out in the parks.

Ms. Wallace Barnum introduced Aurora "Rudy" Ayala. Ms. Ayala is a new employee to the County as of December. Ms. Ayala was in the medical field and is a new member of the reservations staff.

Ms. Ayala thanked everyone for the opportunity to work at the County. She has been enjoying her time here.

Commissioner Doolittle congratulated new staff and hopes they enjoy their time with the County as much as he did. He thanked Mr. Harrower for stepping up and taking on his new role.

Commissioner Daniel congratulated new staff.

**8. Presentation by Eagle Scout Candidates Cameron Fick and Dawson Allen on their handicap accessibility project at Mayberry Park**

Eagle Scout Candidates were not available for their presentation.

**9. Updated presentation by Polygrarian Institute and possible recommendation to the Board of County Commissioners on an Agreement between Washoe County and Polygrarian Institute**

Colleen Wallace Barnum introduced Melissa Nixon and Neil Bertrando from Polygrarian Institute. Polygrarian gave a presentation at the last meeting and they are now here to give a presentation with more detail.

Melissa Nixon and Neil Bertrando gave a presentation.

In response to Commissioner Doolittle regarding the impact to existing pasture agreements, Ms. Wallace Barnum said she did talk to the current pasture leasee to let him know that this could potentially happen and where it would be placed in the park. He is not opposed to it, but expressed concern that the neighbors may have, based on parking.

In response to Commissioner Doolittle regarding in the presentation a 5-year agreement, that was mentioned, but the current draft agreement looks like it's for 3-years with option to renew for two additional years, Ms. Wallace Barnum said our typical agreements are 3-year agreements with an option to renew for two years, which will equate to the five Polygrarian is hoping for.

In response to Commissioner Doolittle regarding, if the institute dissolves or the agreement is cancelled, Mr. Bertrando said they would return the property to its original condition and if the underground water line is installed, it would become a Parks' asset. They are planning to put money aside as bond in case they do dissolve.

Commissioner Buckley said if they bring in goats the northeast would be the furthest from homes and would be the best area. The area has just been used as pasture and if it becomes more productive she feels it would be a very good idea.

In response to Commissioner Sheakley regarding funding for this project, Ms. Nixon said they work with Nevada Department of Agriculture and have received grants to fund the projects already. It's difficult to get grants for this project because they do not have permission yet. In addition to grants, they also work with private foundations as well as private donors. Their mentorship program would be a fee for service program.

In response to Commissioner Guinn regarding the waterline extension, Mr. Bertrando said they would pay for the extension. Once it is installed it would be left as an asset for the County. They will work with staff to make it is accessible and acceptable.

In response to Commissioner Guinn regarding engineering in-house, Mr. Bertrando has not had access to the map of the irrigation system. They did a sight assessment. They are open to Parks' recommendation and can do in-house or find a consultant.

In response to Commissioner Guinn regarding the northeast preferred overlap existing haying, Ms. Wallace Barnum said on the map there is an old paved road that delineates the section they are most interested in. The current lessee would no longer hay that portion and 6 acres would be removed from that lease agreement. The ditch water would be stopped and diverted elsewhere.

In response to Commissioner Guinn regarding charge for existing lease and loss of revenue, Ms. Wallace Barnum said we do and would have to determine a reduction of fees based on the loss of acreage.

Mr. Bertrando said they would be willing to pay for a lease, if it is a funding issue.

In response to Commissioner Buckley regarding selling products, Mr. Bertrando said one of the funding revenue streams would be to sell to locals, local businesses, as well as potentially through a partnership program with Renown, as part of their prescription food program.

Commissioner Daniel said this is a strong public, private partnership that will teach kids and adults about where their food comes from.

**Public Comment:**

Cathy Brandhorst discussed issues of importance to herself.

Commissioner Olson thanked everyone for moving forward with this project. He is excited to see the project and knows there are questions that need answers. This is an opportunity to add more layers of use to our public parks.

## **Public Comment:**

Rebekah May said she is in full support of this project. She is fortunate to have amazing friends who are willing to push forward the food movement. The thing that brings us together mostly in life is the fact that we all eat three times a day and that has gotten really skewed. She has worked in social services for the last 10 years, but has been an organic farmer for 8 years and she saw over and over again that is food is medicine. We are literally changing lives by showing people what the potential of working with your hands are. Ms. May said she is so proud of the city we have and how willing everyone is to collaborate for the good of all of the citizens.

Motion by Commissioner Olson for staff to negotiate a Lease Agreement between Washoe County and Polygrarian Institute as authorized under NRS 244.284, to be taken to the Board of County Commissioners for possible approval.

Commissioner Guinn asked that during the negotiations he would like Polygrarian Institute to look into funding to offset the lost revenue to Parks.

Second by Commissioner Guinn. Motion carried

## **10. Program/Park of the Month: Tales from the Trail**

Colleen Wallace Barnum, Park Operations Superintendent introduced Samantha Szesciorka. Ms. Szesciorka had an incredible journey last year and she wanted her to share a small portion of her Nevada Discovery Ride.

Ms. Szesciorka gave a presentation.

In response to Commissioner Jung regarding Bella and Sage, Ms. Szesciorka said Bella is a rescue from the Humane Society and her horse Sage was born in the wild, rounded up when he was two and ended up in the prison program in Carson City. Sage spent 90 days where he was paired with an inmate for gentling and training.

In response to Commissioner Jung regarding Washoe County filming or production of the ride, Ms. Szesciorka said Washoe County was a sponsor for the ride in exchange for letting her take so much time off. Staff came out and filmed her ride creating a series of videos, including one for the State of the County.

## **11. Parks Reports**

Colleen Wallace Barnum, Park Operations Superintendent, highlighted reports.

Commissioner Jung said she, along with a couple of friends will be running 5K on April 8<sup>th</sup> in preparation for an October ½ marathon at the Grand Canyon.

Commissioner Daniel said the Arboretum training is a great way to get involved as a volunteer in the community. The training they provide is excellent. It starts at 9 a.m. tomorrow and it is a 3-week training.

Dave Solaro, Director, said the Golf Report will be a standing item on the Agenda. January was very slow for both operators. There was some flood damage that occurred at Sierra Sage

and he will be going out this week to take a look. Washoe Golf Course has a little bit of flood damage at the 12<sup>th</sup> hole.

Commissioner Buckley is impressed with the income Washoe Golf Course had in January with all of the snow. She has heard reports that the greens are bigger already and she has driven past and it is greener.

## **12. Director's Report**

Dave Solaro, Director, said with all of the flooding and damage that occurred, he wanted to assure Commissioners that staff is doing the best they can with the resources that are available. There was a lot of damage and we are trying to make sure that reservations are taken care of and that the parks are safe, our #1 priority. If you are out in the community and talking to people who are complaining about parks or areas of parks that are closed, it is for the safety of the patrons and staff.

Commissioner Doolittle said staff is doing a tremendous job given what they have to work with, particularly without seasonal employees on board yet. For example the damage at South Valleys Regional Park with the creek overflowing and going through the playground and ball fields is already repaired. He was able to talk to people out there and no one was upset.

Director Solaro said one of the struggles is to get enough seasonal employees. If anyone knows of anyone interested in a job in the parks, we can use the extra help.

Commissioner Jung said when Commissioner Daniel came to the Board of County Commissioners meeting and spoke on behalf of this Commission, he didn't stay, but Director Solaro relayed the information that this Commission decided that a 7% reinstatement to the Parks funding towards Operations was justified. Commissioner Jung put on the record that she expects Director Solaro to find that 7% and start making these parks whole again.

Commissioner Daniel said he has no doubt that Director Solaro and Mr. Crump are working hard to make sure the County is repaired. It's a lot of work to go through the FEMA process and happy that is coming back in our favor.

Commissioner Guinn said, as an Engineer you can't design for this kind of flooding. There is a lot of finger pointing and he has been through some of those Board meetings and Commissioners' staff was hammered. He said you can design for a flood like that, but there is not enough money in this County to design one culvert for that kind of flood. Commissioner Guinn thinks staff has done a great job and public awareness is the best idea to move forward with.

## **13. Commissioner's Comments**

Commissioner Guinn said he lives up by Mount Rose and at the beginning of the winter with the amount of snow, he doesn't think anyone was prepared for that. They responded really well with plowing and thanked staff for being on top of that.

Commissioner Guinn said he was at the Board of County Commissioner meeting when the new Washoe Golf Course Lease was approved. He had some disagreements with how the Commissioners voted, but it seems like they are following their promises. Commissioner Guinn has seen a lot of advertisements for Washoe Golf, more than he has ever seen. He



appreciates that they are following through and makes him more calmer with the Lease Agreement.

Commissioner Daniel said looking at seasonal staffing it's kind of like rebuilding a core group that does not exist anymore. Before the recession he believes there were at least 100+ seasonal employees, and now there is less hired. Recruiting is vital and that 7% increase would go a long way to pushing those seasonal numbers back up and would be a great reinvestment of parks.

#### **14. Public Comments**

Cathy Brandhorst discussed issues of importance to herself.

#### **15. Adjournment**

Adjournment 3:43 p.m.

Respectfully submitted,

Joanna Schultz



# WASHOE COUNTY

"Dedicated To Excellence in Public Service"

[www.washoecounty.us](http://www.washoecounty.us)

## STAFF REPORT

COMMISSION MEETING DATE: June 6, 2015

**DATE:** July 27, 2017  
**TO:** Open Space and Regional Parks Commission  
**FROM:** Eric Crump, Operations Division Director  
328.2182, [ecrump@washoecounty.us](mailto:ecrump@washoecounty.us)  
**THROUGH:** Dave Solaro, Director  
328-3624, [dsolaro@washoecounty.us](mailto:dsolaro@washoecounty.us)

**SUBJECT:** Review, discussion and possible recommendation to the Board of County Commissioners regarding possible purchase of a permanent diversion easement [totaling 12,275± square feet] by Truckee Meadows Water Authority on APN#150-492-20, commonly known as Whites Creek Open Space, at the appraised value of \$3,100.

---

### SUMMARY

Washoe County, through its Community Services Department, owns and manages an 8.26± acre site [APN 150-492-20] commonly known as Whites Creek Open Space. Truckee Meadows Water Authority (TMWA) is requesting a permanent diversion easement totaling 12,275± square feet.

**Strategic Objective supported by this item:** Safe, secure and healthy communities

### PREVIOUS ACTION

**November 13, 2012-** The Board of County Commissioners approved an update to Parkland Easement Policy

### BACKGROUND

**TWMA Proposal:** TMWA submitted an easement application (attached) to Washoe County in May requesting a proposed diversion easement on parcel number 150-492-20, as part of the future treatment plant facility. The 12,275± square feet easement would include a diversion of Whites Creek installed below the creek be, a 15' x 30' pump station and pad, and gravel access. A site plan is included in the packet.

**Process and Review:** After initial review by Parks staff, and the District Attorney's office, it was determined that the request was compliant with the approved Washoe County Parkland Easement Policy. As prescribed in the easement policy, TMWA submitted an independent appraisal to provide a property history and a monetary valuation of the easement requested. Anthony Wren, MAI, SRA issued an appraisal report on May 24, 2017, concluding and recommending the value of the proposed 12,275± easement is \$3,100. A summary of the appraisal is included in the packet.

AGENDA ITEM # \_\_\_\_\_

Cost Analysis and Project Alternatives:

TWMA evaluated a number of potential locations for the Mr. Rose Water Treatment Plant and Whites Creek diversion. The location selected for the treatment facility was determined to be the only viable alternative because of land availability and proximity to existing infrastructure. The location of the Whites Creek diversion was selected because of its proximity to the treatment plant location and because Whites Creek at the proposed location is below the more pristine areas of the creek while still being sufficiently upstream of the urbanized area and potentially polluted storm water runoff.

Compatibility with Whites Creek Open Space intended use

Whites Creek Open Space APN#150-492-20, was offered for dedication to Washoe County as a non-motorized trail corridor as part of the Mt. Rose Estates Subdivision, and was accepted by Resolution by the Board of County Commission on September 4, 2012. The parcel is part of the Whites Creek Trail system. The Whites Creek Trail currently runs on the south side of Whites Creek the entire length of the parcel, and the proposed easement would be located on the north side of the Whites Creek.

Staff Evaluation

Because the proposed easement will have minimal impact to the intended use of the parcel and the existing trail system, staff is recommending approval of the easement for the appraised value and restoration as identified in the "Proposed Restoration Plan" section of the Parkland Easement Application, including screening of the pump station using natural vegetation.

**FISCAL IMPACT**

Should the easements be approved, purchase of the easements, construction, revegetation maintenance, and permitting associated with the project would be the responsibility of the applicant. The easement proceeds will be deposited into the appropriate park district, compliant with the parklands easement policy guidelines.

**RECOMMENDATION**

Staff recommends that the Open Space and Regional Park Commission recommend to the Board of County Commissioners to approve the purchase of a permanent diversion easement [totaling 12,275± square feet] by Truckee Meadows Water Authority on APN#150-492-20, commonly known as Whites Creek Open Space, at the appraised value of \$3,100.

**POSSIBLE MOTION**

Should the Board agree with the staff recommendation, a possible motion would be:

"Move recommend to the Board of County Commissioners to approve the purchase of a permanent diversion easement [totaling 12,275± square feet] by Truckee Meadows Water Authority on APN#150-492-20, commonly known as Whites Creek Open Space, at the appraised value of \$3,100.



**WASHOE COUNTY  
COMMUNITY SERVICES DEPARTMENT**



**PARKLAND EASEMENT APPLICATION**

**APPLICATION INFORMATION**

Applicant Name:	Truckee Meadows Water Authority	Application Date:	May 26, 2017
Applicant Representative:	Heather Edmunson, Land Agent	Contact Number:	775-762-4162
Mailing Address:	P.O. Box 30013 Reno, Nevada 89520		
Email:	<a href="mailto:hedmunson@tmwa.com">hedmunson@tmwa.com</a>	Fax:	775-834-8280

**SITE INFORMATION**

APN(s)	150-492-20		
Name of Park/Open Space	Whites Creek		
Easement Type:	Diversion Easement	Proposed Start Date:	September 1, 2017
Length of Construction:	2 Months		

**DESCRIPTION OF PROPOSED ACTIVITY**

Truckee Meadows Water Authority is requesting permission for a diversion easement on Whites Creek that will be connected to a future treatment plant facility.

**STATEMENT OF NEED AND JUSTIFICATION REQUEST**

TMWA provides water service to the Mt Rose fan area using local groundwater as the primary source of water. The recent draught highlighted the vulnerable nature of the water supply and numerous domestic and municipal production wells lost critical production capacity. Some wells failed entirely and had to be deepened. In response to the limited available water supply, TMWA is taking steps to develop additional sources of supply to offset the demand on the local groundwater supplies.

**ALTERNATIVE ALIGNMENTS CONSIDERED BY APPLICANT**

TMWA evaluated a number of potential locations for the Mt Rose Water Treatment Plant and Whites Creek diversion. The location selected for the treatment plant was determined to be the only viable alternative because of land availability and proximity to existing infrastructure. The location of the Whites Creek diversion was selected because of its proximity to the treatment plant location and because Whites Creek at the proposed location is below the more pristine areas of the creek while still being sufficiently upstream of the urbanized area and potentially polluted stormwater runoff.

**ENVIRONMENTAL IMPACTS (Natural, cultural, historical resources)**

The design of the diversion was developed to minimize potential environmental impacts. The diversion itself is designed to be installed below the creek bed and will always pass water downstream to meet riparian needs and downstream water rights. The diversion is also designed to continuously pass debris, sediment, and cobbles downstream minimizing the need to perform intrusive instream maintenance. The construction of the diversion and associated pump station will require the removal of vegetation and a temporary bypass of creek water around the construction site. At completion of the project, the disturbed areas will be restored using natural vegetation.

**VISITOR USE IMPACTS**

The Whites Creek trail is located on the south bank of Whites Creek in the vicinity of the proposed project. The project will not impede the use of the trail. Access to the easement will be restricted during the construction activities to safeguard public safety. Once the vegetation is reestablished, it will be difficult to see the diversion and pump station and only filtered views will be available from the Whites Creek trail.

**IMPACTS TO EXISTING UTILITIES OR STRUCTURES**

The pump station will place an additional burden on the local electrical system, however there is available capacity in the electrical power system to accommodate the pump station demands.

**PROPOSED RESTORATION PLAN**

The disturbed areas will be revegetated with native upland species and provided with temporary irrigation to promote establishment. The revegetation plan will meet the requirements of the Section 404 permitting and approved by the US Army Corps. Streambanks upstream and downstream of the diversion structure will be revegetated with native willows and roses. After recontouring, slopes will be immediately stabilized with erosion control blankets over a revegetation seed mix before willow wattles, willow poles, and containerized Woods rose (deepot) are installed. Willow poles will be at least 6 feet long to ensure that 20 percent of the length of the poles extend below the June water level. Willow wattles, which are willow branches tied in a bundle 8 inches across and planted horizontally, will average 8 feet in length. All willow material will be cut from healthy, dormant branches of willow found on-site. Woods rose and willow poles will be planted alternatively on average four foot centers. The riparian revegetation will be monitored for two years after the date of last installation to evaluate survival of plantings, detect noxious weeds, and ensure the effectiveness of erosion control.

**ADDITIONAL ITEMS TO BE SUPPLIED BY APPLICANT**

- 2 copies of proposed site plans/maps (Minimum size 8 1/2" x 11 - maximum size 11" x 17")
- \$100 non-refundable application fee (checks, money orders payable to Washoe County. Credit card payments accepted in person only.)



Signature

5/26/17

Title

Please submit original application with payment attn.:

Dennis Troy, Park Planner  
Washoe County Community Services Department  
PO Box 11130, Reno, NV 89520  
[dtroy@washoecounty.us](mailto:dtroy@washoecounty.us)

To obtain an electronic version of this application visit: [www.washoecountyparks.com](http://www.washoecountyparks.com)

Please be advised that your application could take up to 10 days for initial review.

<u>Interoffice Use Only</u>			
Easement #	_____	Date Rec'd	_____
Park Name	_____		
Park District	_____		
JB	DS	EC	BW
PC	BCC		

**EXHIBIT "A"**

**Truckee Meadows Water Authority – Whites Creek  
Diversion Easement**

A Diversion Easement, situate within the Northeast 1/4 of Section 35, Township 18 North, Range 19 East, Mount Diablo Meridian, Washoe County, State of Nevada, more particularly described as follows:

Commencing at the Northwest corner of that certain Dedicated Open Space (Parcel) 2-A as depicted on "Record of Survey in Support of a Boundary Line Adjustment for TL Mt. Rose Estates, L.P.", recorded on August 24, 2012, as Record of Survey 5449, File No. 4144695, Official Records of Washoe County, Nevada;

Thence along the northerly line of said Parcel 2-A, South 89°24'35" East, 196.35 feet;

Thence North 44°25'45" East, 32.66 feet to the **POINT OF BEGINNING**;

Thence continuing North 44°25'45" East, 180.00 feet;

Thence departing said northerly line, South 45°34'15" East, 40.00;

Thence South 00°34'15" East, 49.50 feet;

Thence South 44°25'45" West, 110.00 feet;

Thence North 89°25'45" West, 49.50 feet;

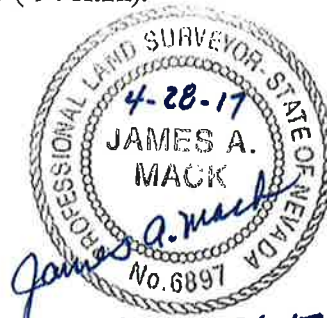
Thence North 45°34'15" West, 40.00 feet to the Point of Beginning.

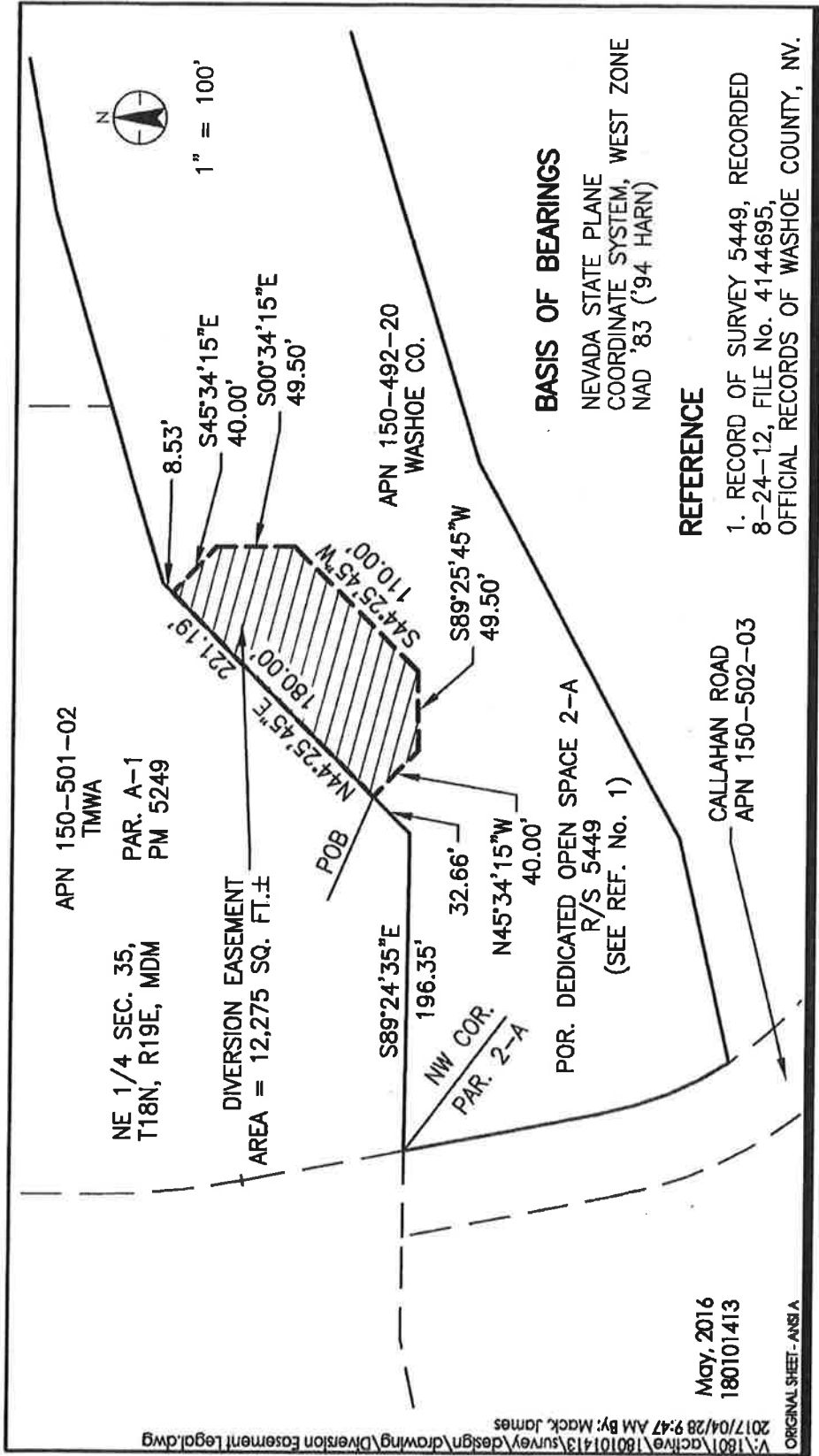
Containing an area of 12,275 square feet of land, more or less.

**BASIS OF BEARINGS:**

Nevada State Plane Coordinate System, West Zone, NAD '83 ('94 Harn).

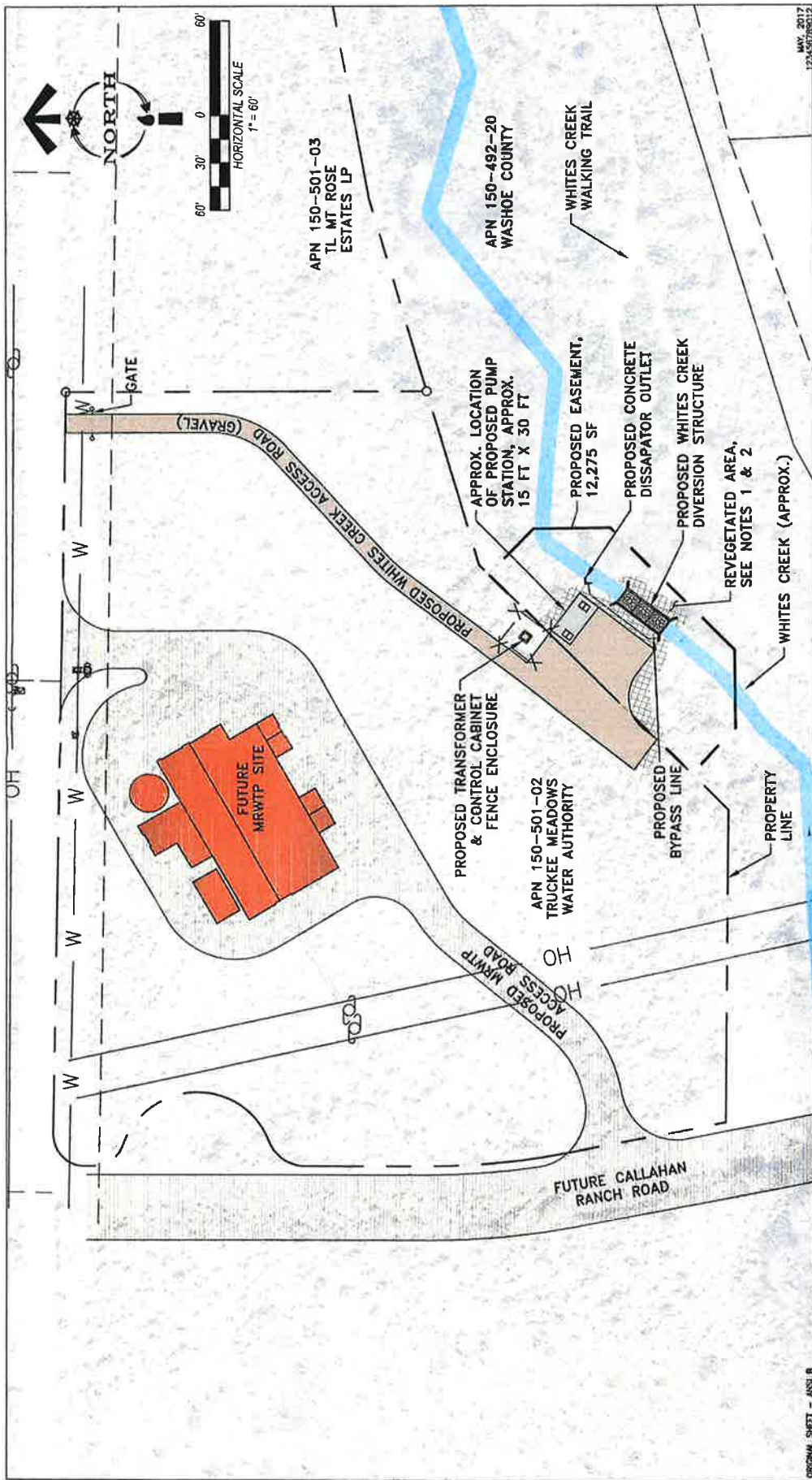
Prepared By: James A. Mack, PLS 6897  
Stantec Consulting Services Inc.  
6995 Sierra Center Parkway  
Reno, Nevada 89511-2279  
(775) 850-0777





6995 Sierra Center Parkway, Suite 200  
 Reno, Nevada, 89511  
 www.stantec.com





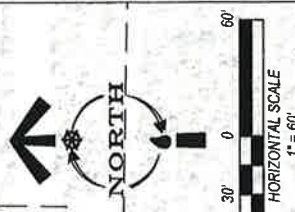
Gen/Project TRUCKEE MEADOWS WATER AUTHORITY  
 MAY 2017  
 123456789012

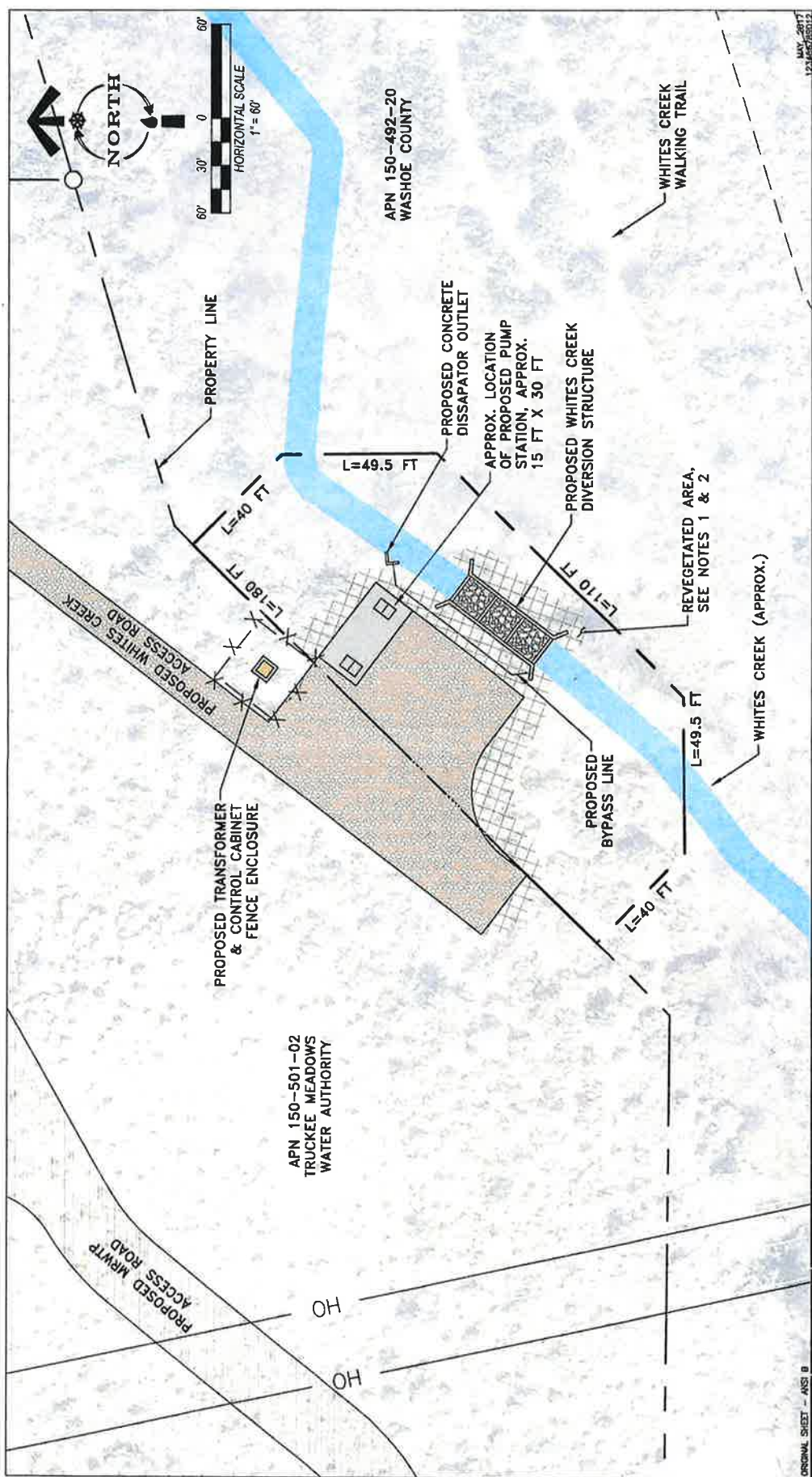
Stantec  
 6995 Sierra Center Pkwy  
 Reno, NV 89511  
 Tel. 775.850.0777  
 Fax. 775.850.0787  
 www.stantec.com



Notes  
 1. RIPARIAN ZONE: SALVAGE TOPSOIL AND ORGANIC MATTER AND RE-APPLY OVER DECOMPACTED SOILS. BROADCAST REVEGETATION SEED MIX 1 AND INCORPORATE. INSTALL COR 70/700 EROSION CONTROL BLANKETS AND ANCHOR IN A KEY TRENCH WITH WILLOW WATTLE, WILLOW POLES, AND WOODS ROSE.  
 2. UPLAND: SALVAGE TOPSOIL AND ORGANIC MATTER AND RE-APPLY OVER DECOMPACTED SOILS. BROADCAST REVEGETATION SEED MIX AND INCORPORATE BY RAKING TO DEPTH OF 1/4 - 1/2 INCH. APPLY WOOD CHIP ONE LAYER DEEP TO ACHIEVE 85 PERCENT (85%) COVER.

Figure No. 01  
 Title MT ROSE WATER TREATMENT PLANT  
 SITE PLAN





Client/Project: TRUCKEE MEADOWS WATER AUTHORITY  
 Figure No. 02  
 Title: WHITES CREEK DIVERSION SITE PLAN

- Notes
1. RIPARIAN ZONE: SALVAGE TOPSOIL AND ORGANIC MATTER AND RE-APPLY OVER DECOMPACTED SOILS. BROADCAST REVEGETATION SEED MIX 1 AND INCORPORATE. INSTALL COIR 70/700 EROSION CONTROL BLANKETS AND ANCHOR IN A KEY TRENCH WITH WILLOW WATTLES, WILLOW POLES, AND WOODS ROSE.
  2. UPLAND: SALVAGE TOPSOIL AND ORGANIC MATTER AND RE-APPLY OVER DECOMPACTED SOILS. BROADCAST REVEGETATION SEED MIX AND INCORPORATE BY RAKING TO DEPTH OF 1/4 - 1/2 INCH. APPLY WOOD CHIP ONE LAYER DEEP TO ACHIEVE 65 PERCENT (65%) COVER.

**Stantec**  
 6995 Sierra Center Pkwy  
 Reno, NV 89511  
 Tel. 775.850.0777  
 Fax. 775.850.0787  
 www.stantec.com



Assessor's Map Number  
**150-49**

STATE OF NEVADA  
**WASHOE COUNTY**  
**ASSESSOR'S OFFICE**  
Joshua C. Wilson, Assessor  
1001 East Ninth Street  
Reno, Nevada 89512  
(775) 328-2321

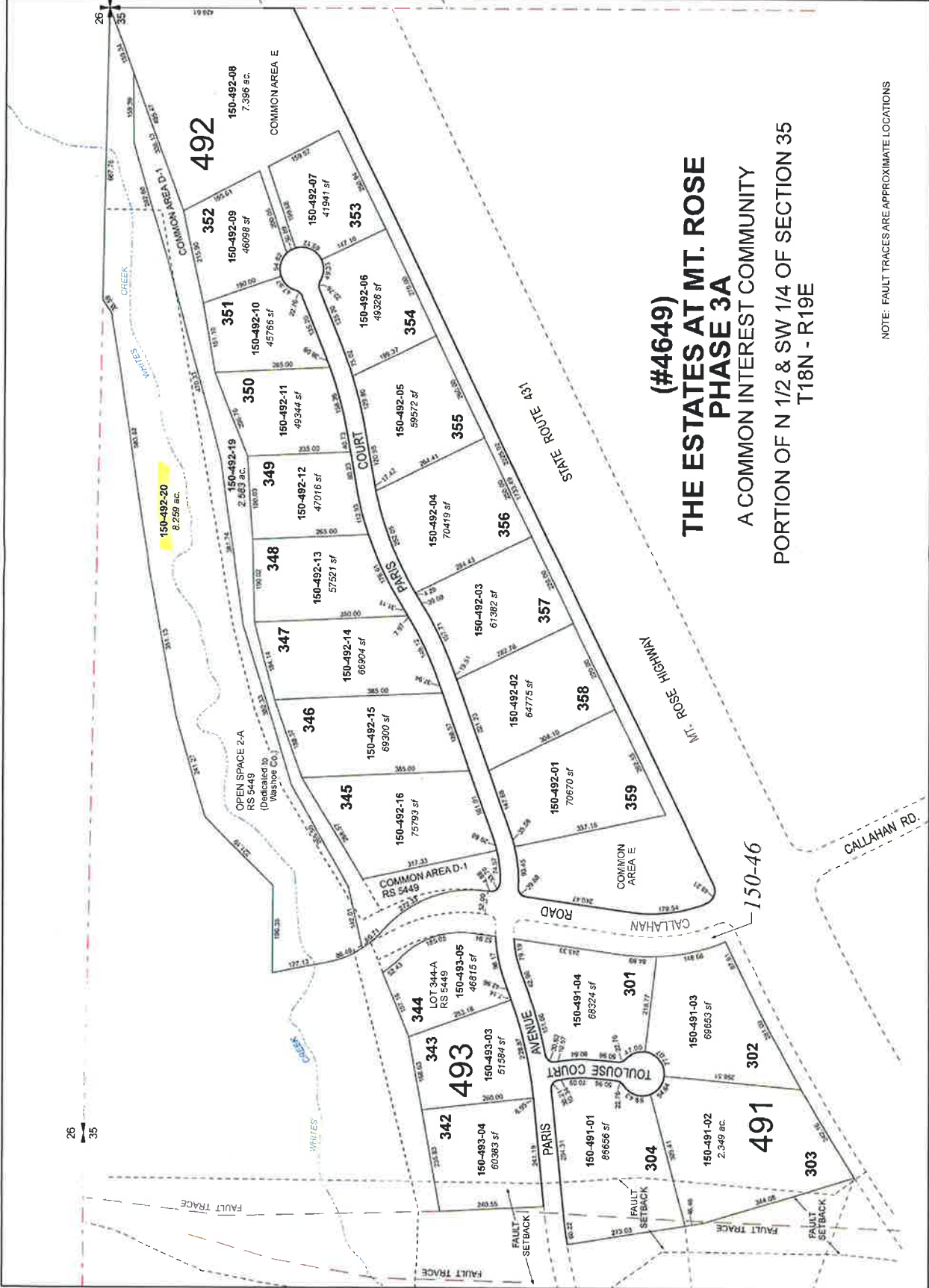


0 50 100 150 200  
Feet  
1 inch = 200 feet



Created by: KSB 2/28/11  
Last updated: KSB 5/20/12  
area previously known as (map#)

NOTE: This map was prepared for the use of the Washoe County Assessor for assessment and is not intended to be used for any other purpose. A survey of the premises, including the boundaries, is assumed to be the responsibility of the owner. No liability is assumed by the Assessor for the sufficiency or accuracy of the data obtained hereon.



**(#4649)**  
**THE ESTATES AT MT. ROSE**  
**PHASE 3A**  
A COMMON INTEREST COMMUNITY  
PORTION OF N 1/2 & SW 1/4 OF SECTION 35  
T18N - R19E

NOTE: FAULT TRACES ARE APPROXIMATE LOCATIONS

**ANTHONY J. WREN AND ASSOCIATES**

P.O. BOX 20867  
RENO, NEVADA 89515  
(775) 329-4221  
FAX (775) 329-5382

TONY WREN, MAI, SRA  
CERTIFIED GENERAL APPRAISER

SUSAN WREN  
CERTIFIED RESIDENTIAL APPRAISER

May 24, 2017

Heather Edmunson SR/WA, R/W-NAC  
Land Agent  
Washoe County  
P. O. Box 30013  
Reno, Nevada 89520-3013

RE: APN: #150-492-20, Callahan Road, Reno, Washoe County, Nevada  
Owner: Washoe County

Dear Ms. Edmunson:

At your request, I have completed an appraisal of and prepared the following appraisal report for the property referenced above. The purpose of my appraisal is to estimate the market value of the property and make a recommendation of compensation for the acquisition of a 12,275± square foot permanent diversion easement. The subject is identified as Assessor's Parcel Number 150-492-20. The larger property contains 8.26± acres. The property is owned by Washoe County.

I have performed no services, as an appraiser or in any other capacity, regarding the property that is the subject of this report, within a three-year period immediately preceding acceptance of this assignment.

The report is intended to conform with Section 2-2(a) of the Uniform Standards of Professional Appraisal Practice and is considered to be an appraisal report.

The following is an appraisal report. It has been prepared in conformance with the reporting requirements of the Appraisal Foundation as set forth in the Uniform Standards of Professional Appraisal Practice (USPAP), as well as the Supplemental Standards required by the Appraisal Institute. My conclusions and the data and analysis upon which they are based are summarized in the attached appraisal report.

The value as of May 21, 2017, is:

**SUMMARY OF VALUE CONCLUSIONS**

(Accounting tabulation not indicative of appraisal method employed)

A.	Value of the whole, before the take:		\$180,000
B.	Value of the part taken, as part of the whole:		\$0.00
C.	Value of the remainder, as part of the whole:(A – B)		\$180,000
D.	Value of the remainder, after the take:		\$180,000
E.	Damages		\$0.00
	Severance damages (C – D)	\$0.00	
	Cost to cure damages	\$0.00	
F.	Other		\$3,100
	Diversion Easement	\$3,100	
G.	Total Value of the Part Taken (B + E + F)		\$3,100

Based on my inspection of the subject and a thorough research of the market, my conclusions and recommendation of compensation are as follows:

**THREE THOUSAND ONE HUNDRED DOLLARS**

**(\$3,100)**

Respectfully Submitted,



Anthony J. Wren, MAI, SRA  
Certified General Appraiser #A.0000090-CG



# Park Districts Report May 2017

## Open Space and Regional Park Commission Meeting

June 6

### **SOUTH REGION HIGHLIGHTS**

- Bowers Mansion has opened for weekend and holiday tours beginning on May 20<sup>th</sup> and running into October. Programs on the porch started May 19<sup>th</sup> and will run Friday nights through June 16<sup>th</sup> starting at 7pm.
- Galena Creek Regional Park has opened all of its facilities after some delay due to snow and flooding.
- Davis Creek campground and park has been near full capacity over the weekends.
- Bartley Ranch Regional park has been extremely busy with special event activities including the Horse Expo, Wild Fire Awareness Trail Run, and the K9 officer fund raiser Paws for the Cause.
- The Link Piazza dog park at Hidden Valley has reopened after a successful seasonal rehab of the turf.

### **UPCOMING EVENTS**

- Programs on the Porch at Bowers Mansion will continue through June 16<sup>th</sup>.
- The Campfire Programs will begin June 23<sup>rd</sup> at Galena Creek Regional Park.
- The pool at Bowers Mansion will be open for the season.

### **NORTH REGION HIGHLIGHTS**

- The Highland Ditch is on and running at Rancho San Rafael, providing water to the multi-use pasture and the Evan's Creek wetlands.
- The second phase of the irrigation rehab at Rancho San Rafael has been completed.
- Ranching at Rancho Series has begun and will run through the end of summer in the Nevada Family Farms at Rancho San Rafael.
- Silver State Striders 50/50 race at Rancho San Rafael was very successful event with over 300 participants.
- Summer Salute Car Show was held at Rancho San Rafael on May 27<sup>th</sup>. It is the largest one day car show in Northern Nevada and raises money for Veterans Guest House and Honor Flight Nevada.

### **UPCOMING EVENTS**

- Lazy 5 concert series will begin on June 7<sup>th</sup> and will continue through August 9<sup>th</sup>.
- Melio Gaspari Water Play Park and North Valleys Splash Park will open to the public on June 10<sup>th</sup>.
- Paws in the Park/Kite festival will be held at Rancho San Rafael on June 3<sup>rd</sup>.
- Women's Walkabout will be held at Rancho San Rafael on June 18<sup>th</sup>.



# May Center Report –May 2017

## Open Space and Regional Park Commission Meeting



### May Arboretum Report

#### HIGHLIGHTS

- ◆ May Arboretum Society donated, \$48,481.52 to the May Arboretum. The funds were used to subsidize the May Arboretum budget to purchase a new Toro Grounds Master 360 4WD 60” deck riding lawn mower for the Arboretum which is to be used exclusively for the gardens maintenance operations as requested by the May Arboretum Society. (\$33,739.52). In addition the remaining funds were used to hire a seasonal staff position, Maintenance Worker II/Gardener (\$14,742.00) to help fill the labor gap due the 60% percent budget cut the arboretum sustained during the great recession, and the inability of the county to restore its’ budget. The 35 hour week position will begin May 31<sup>st</sup> and last through fall. The funding for the position will be administered through ManPower. This position will be a tremendous help to the operation and maintenance of the underfunded Arboretum. The Arboretum staff is grateful to the Society for their generosity and continuous support.
- ◆ The May Arboretum Society will be holding their annual plant sale on June 3, 2017 from 8:00 am to 1:00 pm in Burke Garden. More than 3,000 plants will be for sale. The plants for sale are unique and hard-to-find and are native and adaptive plant species. Sun and shade perennials, assorted herbs, succulents and plants that attract butterflies and pollinator will also be for sale. Most plants chosen are considered sustainable for our environment. Arboretum staff and Society members will be on hand to assist the public with their gardening questions. Proceeds from the event benefit the May Arboretum and Society.
- ◆ The May Arboretum celebrated Public Garden Day on May 12 which is always falls on the Friday before Mother’s Day. Washoe Parks Operation Superintendent and the Horticulturist commemorated the day by inviting the public to tour the greenhouse and to recognized the Garden Gate Club for their \$32,000.00 donation assist with the construction of the greenhouse and to pay tribute to Public Gardens Nationally.
- ◆ May Arboretum staff members, Phil Brazier, Horticulture Assistant and Bradon Franklin, Maintenance Worker II the Western Chapter of the International Society of Arboriculture conference in San Diego California. Funding was provided by the Wilbur May Foundation.

### **Arboretum Improvement Projects**

- ◆ Construction continues on the Arboretum greenhouse. It is nearly complete after months of delay.
- ◆ Iris BG plant records program improvement was installed this month and is running. Installation and training took place under the direction of the horticulturist. The new software is designed and used by botanical gardens and arboretums nationally and internationally for plant accession and research. Washoe County will host the site. The new software will stream line the plant records and plant accession program and take the Arboretum to a new professional and scientific level. Funding for the new software was provided by a generous donation from the May Foundation (\$8,700.00).



## May Center Report –May 2017

### Open Space and Regional Park Commission Meeting

- ◆ The paver repair project in Honey's Garden was completed this month. Infrastructure preservation funds were used for the improvement.
- ◆ Kristen's garden upgrade is nearly complete. The garden will remain closed until further notice. Funds were provided by the May Arboretum Society (\$13,000.00)
- ◆ Lear Garden concrete project was completed this past month. Old pavers were removed and the concrete was poured and stamped. The concrete deck will eliminate future damage from burrowing rodents. Infrastructure preservation funds were used for the improvement.
- ◆ Rodent control measures continue throughout the Arboretum. Over the past few years, burrowing ground squirrels have caused over \$15,000 in damage to the Arboretum's infrastructure.





# Park Planning and Development

## Open Space and Regional Park Commission Meeting

### June 6, 2017

#### PROJECT HIGHLIGHTS

##### Ballardini Ranch Trail connection to Thomas Creek

- Funded by 2000 WC-1 Bond and SNPLMA.
- Construction for Trail Connector between Ballardini Ranch Trailhead and Thomas Creek Trailhead began on Thursday, October 27<sup>th</sup>. Sierra Trail Works has been contracted to construct the first few miles of new trail. Great Basin Institute crews are assisting Sierra Trail Works. Volunteers have worked to assist on getting the project ready for winter. Bridge is being designed for ditch crossing.
- Trail will not be opened until fall 2017 at the earliest.

##### Ballardini Ranch property purchase

- Willing Seller letter received for purchase of 3 additional parcels totally 93.27 acres of the Ballardini Ranch
- Phase 1, Appraisal and Title Report Complete
- Offer letter being drafted

##### Eastern Sierra Trail Coalition

- Assistance grant received from National Park Service Rivers and Trails Conservation Assistance Program to form a Trails Coalition
- Charter and Resolution at approval level
- Vision is a Regional network of sustainable trails that provide connectivity between communities, points of interest, and outdoor recreation opportunities within the Eastern Sierra and Tahoe Region.
- Coalition is being led by Washoe County and members include: Back Country Horseman, BLM, USFS, Carson City Parks & Open Space, Carson Valley Trails Association, College Cyclery, Eagle Valley Trail Committee, Friends of Incline Trails, Great Basin Institute, Muscle Powered, Nevada State Parks, Biggest Little Trail Stewardship, Tahoe Fund, Tahoe Pyramid Bikeway, Tahoe Rim Trail Association, Tahoe Area Mountain Biking Association, Washoe County Parks, Washoe Zephyr Consulting, Alta Planning
- **Coalition working through Community Foundation to submit proposal for "Truckee Meadows Foundation for Trail Connections" to support efforts for existing and future trail construction and maintenance.**

##### Eagle Canyon Park Playground

- Project awarded to Truckee Meadows Construction, approved by BCC on March 28, 2017.

##### Gator Swamp Park Playground

- Project awarded to Truckee Meadows Construction, approved by BCC on March 28, 2017.

##### Galena-Joy Lake-Callahan Fuels Project

- NDF grant for continuation of fuels reduction project from Galena Regional Park to Callahan Ranch Road along Galena Creek. Grant awarded to NDF. Washoe County providing linkage between staff, community and TMFPD.

### Galena Terrace Park

- Project in cooperation with Galena Terrace Homeowners Association to construct new playground facility that will be managed and maintained by HOA.
- Final design of the park has been selected.
- Design and Construction agreement and Maintenance Agreement has been forwarded to Galena Terrace Maintenance Association for review by their legal counsel

### Hunter Creek Bridge

- Lumos and Associates on contract for engineering specification and bid documents.

### Land and Water Conservation Fund

- Grant for resurfacing of the playground at the South Valley Regional Park received and accepted by the BCC May 10, 2016. This will replace the existing wood chip surfacing with a rubberized material.

### Little Valley Burned Area Emergency Response Team (BAER)

- Washoe County leading multi-agency team to assess and mitigate impacts of the Little Valley fire to public and private property.
- BAER team completed assessments October 31<sup>st</sup>
- Restoration plans completed.
- Straw wattles and log erosion barriers installed in December. No work during January due to snow.
- Funding for implementation of BAER team restoration plans being sought.
- \$25,000 from Dream Tags received.

### NDF Medusahead Grant

- Project on-going. And extended to June 26, 2018.

### North Valleys Trail Project

- Funding received from Recreational Trails Program to construct new trail and trailhead adjacent to North Valleys Phase V Expansion
- Design and layout completed by Sierra Trail Works

### North Valleys Phase V Expansion

- Permit approved by City of Reno
- Project out to bid on the week of March 13-15. No bids received
- Project rebid with 2 bidders

### Martin Luther King Jr. Park

- Rehabilitation to surfacing
- Design services contract awarded to Stantec Engineering for preparation of construction documents

### Truckee River – One River Plan

- The One Truckee River Management Plan will manage, protect and provide stewardship for the Truckee River across all jurisdictional boundaries. Nevada Land Trust and Keep Truckee Meadows Beautiful will act as lead agencies with the assistance and cooperation of a large Truckee River stakeholder group to fundraise and develop the plan. **Plan adopted by BCC September 27, 2016.**
- Cheryl Surface is leading the Recreation Team
- Funding provided through Washoe County State Question 1 Program

#### Stateline to Stateline Bikeway – Tahoe East Shore Trail

- Name of the project has been adopted as the Tahoe East Shore Trail per the Signage Master Plan completed by Wood Rodgers.
- Granite construction awarded Construction Manager at Risk (CMAR) by Nevada Department of Transportation (NDOT) for construction of 3 mile of trail and parking facilities.
- 2 parking lots and tunnel under SR-28 completed.
- Washoe County leading the Signage and Interpretive Plan
- Phase 2 of project approved by NDOT Transportation Board to move forward with completion of the North Demonstration project from Incline Village to Sand Harbor
- Project will begin again Spring 2017.

#### Sun Valley Trail Enhancement Project

- Project received funding from the Recreational Trails Program. Project includes OHV trail closures and trail rehabilitation submitted for Sun Valley Regional Park, based on trails plan produced by NV Trail Works.
- Fencing, trails restoration, seeding and planting completed. Great Basin Institute crews will be back in the Spring to complete re-seeding efforts, installation of stairwell to Sun Rock Rim trail and cleanup of illegal dump sites.

#### Wilbur May Arboretum Greenhouse Project

- Project construction underway
- Footings poured on November 29, 2016
- Greenhouse structure will arrive first of January, 30-day assembly
- Project completion date mid-February 2017

# Volunteer Report

Open Space and Regional Park Commission Meeting

June 6, 2017

## May Highlights

- Sixty-five volunteers from the three Truckee Meadows Rotary Clubs, along with staff from the Boys and Girls Club of Truckee Meadows, worked especially hard during their “Rotarian at Work Day” to make some very significant improvements to the Joe Mitchel Center at Lemmon Valley Park (currently being used by BGCTM). The group removed old ceiling tiles and replaced them with new ones, replaced all fluorescent light bulbs with energy saving LED bulbs, painted the inside of the facility a cheery color palate, painted the outdoor restrooms, and painted the underside of the pavilion shade structure. Everyone has been very pleased with the results!
- Washoe County Parks benefitted greatly from the contributions of 244 volunteers working over four hours during Keep Truckee Meadows Beautiful’s “Great Community Cleanup”. Volunteers removed dumpsters full of invasive weeds, performed trail maintenance, wrapped trees, picked up litter, and completed other various maintenance and beautification projects.
- Rangers at Rancho San Rafael Park put together a volunteer appreciation barbeque at the Regional Archery Facility for the Job Corp welding vocation students that have been immensely helpful in putting together 6 shade structures that included benches, shelves and bow rests. These twenty or so students have been working on the crafting and installation of these structures for the past several months, sometimes volunteering over 300 hours per month. The hamburgers and sausages with all the fixings were thoroughly enjoyed by all!

## **May Volunteer Hours/Value:**

*Intern hours have increased as we are fortunate enough to have two really great Job Corp interns with both the Arboretum and Rancho San Rafael rangers. There have also been several larger cleanups this month which contributed to higher numbers.*

	<b>May 2017</b>	<b>May 2016</b>	<b>% Increase</b>	<b>Total for YTD 2017</b>	<b>Compared to YTD 2016</b>	<b>% Increase</b>
# of Volunteer Hrs	3,054.65	2,708.25	<b>12.8%</b>	8,706.75	8,342.75	<b>4.4%</b>
# of Intern Hrs	247	56	<b>341.1%</b>	937	1,149.25	<b>-18.5%</b>
Total \$\$\$ Value*	\$79,701.83	\$65,125.73	<b>22.4%</b>	\$232,800.12	\$223,631.52	<b>4.1%</b>

*\*The hourly rate of \$24.14 used for calculating the dollar value is based on the estimated national value of volunteer time as reported by [www.independentsector.org](http://www.independentsector.org).*

## Upcoming Events

- Washoe County Parks has partnered with the Nevada Area Council of the Boy and Girl Scouts of America to put together a Conservation Work Day on Saturday, June 10<sup>th</sup>. Scouts can sign up online to volunteer at the Arboretum, Lazy 5, Crystal Peak Park, Davis Creek, or Galena Creek. The hours of service will go towards their service badges. We look forward to continuing to host conservation days with the scouts in the future!

## Cal-Mazz Golf Management Revenue Summary Report 2017

Revenue Summary:	Jan	Feb	March	April	May	June	July	August	Sept	Oct	Nov	Dec	TOTAL 2017
Green Fees	\$ 1,068	\$ 5,831	\$ 32,442	\$ 56,050									\$ 95,391
Tournament Revenue	-	-	-	-									-
Driving Range	14	712	3,993	5,251									9,970
Power Carts	42	3,288	19,106	30,598									53,034
Lessons	-	-	505	840									1,345
Other rental, repair	-	23	130	170									323
Pro Shop Merchandise	164	2,121	7,200	10,288									19,773
Food & Beverage	-	1,719	9,067	24,092									34,878
Gift Cards	335	125	269	389									1,118
Sales Tax	13	264	1,187	2,335									3,799
Other ~ Men's/Women's Club	325	3,575	7,570	16,675									28,145
Other ~ Annual Fee	-	2,080	1,960	275									4,315
Other ~ Pay on Account	60	75	500	5,367									6,002
Other ~ donations	-	-	-	-									-
Other ~ CC Tips	-	87	434	827									1,348
Other ~ Misc	-	-	44	222									266
<b>TOTAL REVENUE</b>	<b>\$ 2,021</b>	<b>\$ 19,900</b>	<b>\$ 84,407</b>	<b>\$ 153,379</b>	<b>\$ -</b>	<b>\$ -</b>	<b>\$ -</b>	<b>\$ -</b>	<b>\$ -</b>	<b>\$ -</b>	<b>\$ -</b>	<b>\$ -</b>	<b>\$ 259,707</b>

**Monthly Summary to be submitted to Washoe County by the 10th of the following month.**

Revenue Reconciled:	Jan	Feb	March	April	May	June	July	August	Sept	Oct	Nov	Dec	TOTAL 2017
Per POSExpress	1,881	19,360	80,907	146,071									248,219
Prom Rounds Sold	140	(300)	3,500	7,308									(300)
Prom Rounds Redeemed	2,021	19,900	84,407	153,379									11,788
													259,707

**Accounting Assumptions:**

- Gift Cards are recorded as revenue when sold due to immateriality
- Annual Dues are recorded as revenue when sold due to immateriality
- Promo Rounds revenue is recorded when the rounds are played, due to selling some in the previous year. All unplayed rounds will be recorded when they expire.

Cal-Mazz  
Sierra Sage Golf Course

2017 Rounds of Play

\$\$	Jan	Feb	March	April	May	TOTAL
18 Green Fee				417		417
18 Junior				15		15
18 Senior				452		452
Winter 18	1	70	459	163		693
Winter Jr 18			5			5
Winter Sr 18	1	116	593	416		1,126
9 Hole Walk-Up				84		84
9 Hole Walk-Up Jr				23		23
9 Hole Walk-Up Sr				145		145
9 Hole Walk-Up Winter	1	33	327	232		593
9 Hole Walk-Up Jr Winter		2	23			25
9 Hole Walk-Up Sr Winter	3	100	336	178		617
Late Rate Adult			10	331		341
Late Rate Junior						0
Late Rate Senior						0
2nd 9 Adult				1		1
2nd 9 Junior						0
2nd 9 Senior				3		3
2nd 9 Winter Adult				3		3
2nd 9 Winter Sr				7		7
<b>DAILY FEE SUBTOTAL:</b>	<b>6</b>	<b>321</b>	<b>1,753</b>	<b>2,470</b>	<b>0</b>	<b>4,550</b>

Golden Annual		2	8	17		27
Adult Annual		8	3	7		18
Senior Annual			26	33		59
SC - Adult 10-Play				2		2
SC - Adult 25-Play						0
SC - Adult 9 Hole 10-Play		1				1
SC - Junior 18 Hole 10 Play						0
SC - Junior 9 Hole 10-Play						0
SC - Senior 10-Play			4	30		34
SC - Senior 25-Play			3	13		16
SC - Senior 9 Hole 10-Play						0
SC - Golden 9 Hole 10-Play		1				1
SC - Gold 18 Hole 10-Play	1					1
SC - Golden 25-Play				1		1
SC - Golden+ 10-Play						0
SC - Golden+ 25-Play						0
Promo Rounds Redeemed	10	60	250	522		842
Tournaments						0
Special Twilight						0
UNR Golf Team				1		1
High School			61	73		134
Misc. Comp		2	16	41		59
Birthday Comp						0
Employee Guest Winter			6	11		17
Employee Guest Summer				7		7
PGA Comp			7	6		13
Employee Comp		9	77	148		234
2-1 NNGA						0
2-1 West Coast Golf				1		1
Birdie Bug Ad						0
Red Dot						0
<b>SPECIAL FEE SUBTOTAL:</b>	<b>11</b>	<b>83</b>	<b>461</b>	<b>913</b>	<b>0</b>	<b>1,468</b>

<b>TOTAL DAILY ROUNDS:</b>	<b>17</b>	<b>404</b>	<b>2,214</b>	<b>3,383</b>	<b>0</b>	<b>6,018</b>
----------------------------	-----------	------------	--------------	--------------	----------	--------------











Special Event/  
 Special Promotions (L.Social/Groupou)  
 Golf18Network TRADE  
 Marshall/Employee

				4																
				45																
				6																
				71		259														
			28	725	2667	3395	0	0	0	0	0	0	0	0	0	0	0	0	0	0
			21	690	2540	3235	0	0	0	0	0	0	0	0	0	0	0	0	0	0

18 Hole Equivalent

Notes/Explanations:

# Transaction Details by Pay Method Report

Washoe G.C.

From: 4/1/2017 12:00:00 AM

To: 4/30/2017 11:59:59 PM

Terminal name: PARKS005400,PARKS005518,PARKS005776

Category	item	qty	cash	amex	discover	credit card	mbr account	credit book	trvl check	personal check	other	room charge	gift card	rain check	total
<b>Accessories</b>															
	align sticks	3	8.98	5.99	0.00	0.00	0.00	0.00	0.00	0.00	0.00	0.00	0.00	0.00	14.97
	ama 4 yds	1	0.00	0.00	0.00	0.00	0.00	7.99	0.00	0.00	0.00	0.00	0.00	0.00	7.99
	ama martini tees	4	6.99	6.99	0.00	13.98	0.00	0.00	0.00	0.00	0.00	0.00	0.00	0.00	27.96
	ama tees	38	48.90	0.00	0.00	129.24	0.00	3.99	0.00	0.00	0.00	0.00	4.99	0.00	187.12
	bagtags	1	0.00	0.00	0.00	3.00	0.00	0.00	0.00	0.00	0.00	0.00	0.00	0.00	3.00
	bristle brush	1	0.00	0.00	0.00	5.00	0.00	0.00	0.00	0.00	0.00	0.00	0.00	0.00	5.00
	champfly tees	8	13.98	0.00	0.00	33.95	6.99	0.00	0.00	0.00	0.00	0.00	0.00	0.00	54.92
	drugstore	2	3.50	0.00	0.00	0.00	0.00	0.00	0.00	0.00	0.00	0.00	0.00	0.00	3.50
	espect cf cg	5	29.97	0.00	0.00	19.98	0.00	0.00	0.00	0.00	0.00	0.00	0.00	0.00	49.95
	eywr epoch	2	18.56	0.00	0.00	20.00	0.00	0.00	0.00	0.00	0.00	0.00	0.00	0.00	38.56
	EZ Brush	0	0.00	0.00	0.00	0.00	0.00	0.00	0.00	0.00	0.00	0.00	0.00	0.00	0.00
	EZ-FIX-IT Tool	1	1.00	0.00	0.00	0.00	0.00	0.00	0.00	0.00	0.00	0.00	0.00	0.00	1.00
	gator mrkr	6	0.00	0.00	0.00	18.94	9.00	0.00	0.00	0.00	0.00	0.00	0.00	0.00	27.94
	golf claw	2	9.30	0.00	0.00	0.00	0.00	0.00	0.00	0.00	0.00	0.00	0.00	0.00	9.30
	Mag Hat Clip	3	0.00	0.00	0.00	16.98	0.00	0.00	0.00	0.00	0.00	0.00	0.00	0.00	16.98
	mcristo cf cig	4	0.00	0.00	0.00	55.96	0.00	0.00	0.00	0.00	0.00	0.00	0.00	0.00	55.96
	pfix	1	0.00	0.00	0.00	11.89	0.00	0.00	0.00	0.00	0.00	0.00	0.00	0.00	11.89
	romjul cf cg	3	12.99	0.00	0.00	25.98	0.00	0.00	0.00	0.00	0.00	0.00	0.00	0.00	38.97
	savoy cf cig	9	30.92	0.00	0.00	39.95	0.00	0.00	0.00	0.00	0.00	0.00	0.00	0.00	70.87
	sharpie ama	9	6.00	0.00	0.00	0.00	0.00	3.92	0.00	0.00	0.00	0.00	7.40	0.00	17.32
	spks	1	10.00	0.00	0.00	0.00	0.00	0.00	0.00	0.00	0.00	0.00	0.00	0.00	10.00

# Transaction Details by Pay Method Report

Washoe G.C.
From: 4/1/2017 12:00:00 AM
To: 4/30/2017 11:59:59 PM

Terminal name: PARKS005400,PARKS005518,PARKS005776

Category	item	qty	cash	amex	discover	credit card	mbr account	credit book	trvl check	personal check	other	room charge	gift card	rain check	total
	Srixon/Cleveland Shoebag	1	0.00	0.00	0.00	24.49	0.00	0.00	0.00	0.00	0.00	0.00	0.00	0.00	24.49
	stinger spks	4	24.00	0.00	0.00	24.00	0.00	0.00	0.00	0.00	0.00	0.00	0.00	0.00	48.00
	Sunscreen 1oz Tube	4	13.82	0.00	0.00	4.99	0.00	0.00	0.00	0.00	0.00	0.00	0.00	0.00	18.81
	Sunscreen: 4OZ Tube	1	0.00	0.00	0.00	9.99	0.00	0.00	0.00	0.00	0.00	0.00	0.00	0.00	9.99
	vbrush	1	0.00	0.00	0.00	5.99	0.00	0.00	0.00	0.00	0.00	0.00	0.00	0.00	5.99
	wrench	1	0.00	0.00	0.00	5.50	0.00	0.00	0.00	0.00	0.00	0.00	0.00	0.00	5.50
	zerotees	8	22.84	0.00	0.00	31.96	0.00	7.99	0.00	0.00	0.00	0.00	0.00	0.00	62.79
	<b>Total: Accessories</b>	<b>124</b>	<b>261.75</b>	<b>12.98</b>	<b>0.00</b>	<b>501.77</b>	<b>15.99</b>	<b>23.89</b>	<b>0.00</b>	<b>0.00</b>	<b>0.00</b>	<b>0.00</b>	<b>12.39</b>	<b>0.00</b>	<b>828.77</b>
<b>Annual Pass Renewal</b>															
	Senior Annual 9 Hole with CARTI Renewal		0.00	0.00	0.00	900.00	0.00	0.00	0.00	0.00	0.00	0.00	0.00	0.00	900.00
	Senior Annual Renewal	3	0.00	0.00	0.00	1,150.00	1,500.00	0.00	0.00	1,299.00	0.00	0.00	0.00	0.00	3,949.00
	<b>Total: Annual Pass Renewal</b>	<b>4</b>	<b>0.00</b>	<b>0.00</b>	<b>0.00</b>	<b>2,050.00</b>	<b>1,500.00</b>	<b>0.00</b>	<b>0.00</b>	<b>1,299.00</b>	<b>0.00</b>	<b>0.00</b>	<b>0.00</b>	<b>0.00</b>	<b>4,849.00</b>
<b>Balls</b>															
	Ball	8	28.80	0.00	0.00	32.00	0.00	0.00	0.00	0.00	0.00	0.00	0.00	0.00	60.80
	BALLS-EXP.1.00	421	156.00	5.00	0.00	236.00	0.00	4.00	0.00	0.00	0.00	0.00	0.00	0.00	401.00
	cal spr sft	15	12.51	0.00	0.00	86.07	0.00	0.00	0.00	0.00	0.00	0.00	0.00	0.00	98.58
	Chrome Soft	26	82.43	0.00	0.00	93.45	0.00	19.43	0.00	0.00	0.00	0.00	65.20	0.00	260.51
	Clinic Dozen Srix SF	20	26.00	0.00	0.00	235.82	0.00	0.00	0.00	0.00	0.00	0.00	0.00	0.00	261.82
	marthin balls	70	184.73	0.00	0.00	104.28	0.00	0.00	0.00	0.00	0.00	0.00	9.24	0.00	298.25
	MAXFLI WASHOE LOGO BALL IND.	6	12.00	0.00	0.00	0.00	0.00	0.00	0.00	0.00	0.00	0.00	0.00	0.00	12.00

# Transaction Details by Pay Method Report

Washoe G.C.

From: 4/1/2017 12:00:00 AM

To: 4/30/2017 11:59:59 PM

Terminal name: PARKS005400,PARKS005518,PARKS005776

Category	item	qty	cash	amex	discover	credit card	mbr account	credit book	trvl check	personal check	other	room charge	gift card	rain check	total
ProV1	Loyalty 4 Doz	2	0.00	0.00	0.00	300.00	0.00	0.00	0.00	0.00	0.00	0.00	0.00	0.00	300.00
Q-Star		42	22.80	0.00	0.00	177.30	32.00	32.00	0.00	0.00	0.00	0.00	65.90	0.00	330.00
Soft Feel	6 Pack	56	265.94	0.00	0.00	179.82	0.00	0.00	0.00	0.00	0.00	0.00	0.00	0.00	445.76
soft fl		40	59.52	0.00	0.00	136.80	0.00	0.00	0.00	0.00	0.00	0.00	0.00	0.00	196.32
super hot	15 pk	1	0.00	0.00	0.00	27.99	0.00	0.00	0.00	0.00	0.00	0.00	0.00	0.00	27.99
TIT. PRO VIX		40	101.50	0.00	0.00	135.10	0.00	6.50	0.00	0.00	0.00	0.00	264.68	0.00	507.78
titnxt		2	8.99	0.00	0.00	0.00	0.00	8.99	0.00	0.00	0.00	0.00	0.00	0.00	17.98
titlo		5	7.99	0.00	0.00	31.96	0.00	0.00	0.00	0.00	0.00	0.00	0.00	0.00	39.95
Z-Star		4	0.00	0.00	0.00	0.00	0.00	0.00	0.00	0.00	0.00	0.00	41.40	0.00	41.40
<b>Total: Balls</b>		<b>758</b>	<b>969.21</b>	<b>5.00</b>	<b>0.00</b>	<b>1,776.60</b>	<b>32.00</b>	<b>70.92</b>	<b>0.00</b>	<b>0.00</b>	<b>0.00</b>	<b>0.00</b>	<b>446.42</b>	<b>0.00</b>	<b>3,300.14</b>

## Carts - Power

\$10	Cart Fee	211	442.86	20.00	0.00	1,005.00	392.86	0.00	0.00	214.29	0.00	0.00	35.00	0.00	2,110.00
\$14	Cart Fee	13	98.00	0.00	0.00	84.00	0.00	0.00	0.00	0.00	0.00	0.00	0.00	0.00	182.00
\$5	Cart Fee	7	10.00	5.00	0.00	20.00	0.00	0.00	0.00	0.00	0.00	0.00	0.00	0.00	35.00
\$6	Cart Fee	387	696.00	42.00	0.00	1,494.00	0.00	0.00	0.00	9.27	0.00	0.00	80.73	0.00	2,322.00
1/2 POWER CART-18		1115	3,316.39	450.00	0.00	12,007.99	0.00	0.00	0.00	703.03	0.00	0.00	247.59	0.00	16,725.00
1/2 POWER CART-18	Issued	7	0.00	0.00	0.00	90.00	0.00	0.00	0.00	15.00	0.00	0.00	0.00	0.00	105.00
1/2 POWER CART-18	Redeemed	66	465.00	0.00	0.00	480.00	0.00	0.00	0.00	0.00	0.00	0.00	45.00	0.00	990.00
1/2 POWER CART-9		335	711.00	54.00	0.00	2,232.00	0.00	0.00	0.00	18.00	0.00	0.00	0.00	0.00	3,015.00
1/2 POWER CART-9	Issued	1	0.00	0.00	0.00	9.00	0.00	0.00	0.00	0.00	0.00	0.00	0.00	0.00	9.00

# Transaction Details by Pay Method Report

Washoe G.C.

From: 4/1/2017 12:00:00 AM

To: 4/30/2017 11:59:59 PM

Terminal name: PARKS005400,PARKS005518,PARKS005776

Category	item	qty	cash	amex	discover	credit card	mbr account	credit book	trvl check	personal check	other	room charge	gift card	rain check	total
1/2 POWER CART-9 Redeemed		7	45.00	0.00	0.00	18.00	0.00	0.00	0.00	0.00	0.00	0.00	0.00	0.00	63.00
10 Play Cart Fee Issued		20	0.00	0.00	0.00	2,210.00	0.00	0.00	0.00	390.00	0.00	0.00	0.00	0.00	2,600.00
5 Play Cart Fee Issued		4	70.00	0.00	0.00	140.00	0.00	0.00	0.00	70.00	0.00	0.00	0.00	0.00	280.00
9-18 Power Cart		3	5.50	0.00	0.00	11.00	0.00	0.00	0.00	0.00	0.00	0.00	0.00	0.00	16.50
Annual Pass Cart Fee		1	0.00	0.00	0.00	500.00	0.00	0.00	0.00	0.00	0.00	0.00	0.00	0.00	500.00
Groupon CART FEE		2	0.00	0.00	0.00	0.00	0.00	0.00	0.00	763.55	0.00	0.00	0.00	0.00	763.55
<b>Total: Carts - Power</b>		<b>2179</b>	<b>5,859.75</b>	<b>571.00</b>	<b>0.00</b>	<b>20,300.99</b>	<b>392.86</b>	<b>0.00</b>	<b>0.00</b>	<b>2,183.14</b>	<b>0.00</b>	<b>0.00</b>	<b>408.32</b>	<b>0.00</b>	<b>29,716.05</b>
<b>Catering</b>															
CATERING		62	2,823.50	0.00	0.00	643.00	0.00	0.00	0.00	4,124.00	0.00	0.00	0.00	0.00	7,590.50
<b>Total: Catering</b>		<b>62</b>	<b>2,823.50</b>	<b>0.00</b>	<b>0.00</b>	<b>643.00</b>	<b>0.00</b>	<b>0.00</b>	<b>0.00</b>	<b>4,124.00</b>	<b>0.00</b>	<b>0.00</b>	<b>0.00</b>	<b>0.00</b>	<b>7,590.50</b>
<b>CCart-Private</b>															
Annual Cart		1	0.00	0.00	0.00	0.00	0.00	0.00	0.00	400.00	0.00	0.00	0.00	0.00	400.00
Cart Usage 2nd Rider		8	30.00	0.00	0.00	50.00	0.00	0.00	0.00	0.00	0.00	0.00	0.00	0.00	80.00
<b>Total: CCart-Private</b>		<b>9</b>	<b>30.00</b>	<b>0.00</b>	<b>0.00</b>	<b>50.00</b>	<b>0.00</b>	<b>0.00</b>	<b>0.00</b>	<b>400.00</b>	<b>0.00</b>	<b>0.00</b>	<b>0.00</b>	<b>0.00</b>	<b>480.00</b>
<b>CCart-Pull Rental</b>															
PULL CART 18 HOLES		2	5.00	0.00	0.00	5.00	0.00	0.00	0.00	0.00	0.00	0.00	0.00	0.00	10.00
PULL CART9 HOLES		20	14.00	3.50	0.00	52.50	0.00	0.00	0.00	0.00	0.00	0.00	0.00	0.00	70.00
<b>Total: CCart-Pull Rental</b>		<b>22</b>	<b>19.00</b>	<b>3.50</b>	<b>0.00</b>	<b>57.50</b>	<b>0.00</b>	<b>0.00</b>	<b>0.00</b>	<b>0.00</b>	<b>0.00</b>	<b>0.00</b>	<b>0.00</b>	<b>0.00</b>	<b>80.00</b>

**Clothing**

# Transaction Details by Pay Method Report

Washoe G.C.

From: 4/1/2017 12:00:00 AM

To: 4/30/2017 11:59:59 PM

Terminal name: PARKS005400,PARKS005518,PARKS005776

Category	item	qty	cash	amex	discover	credit card	mbr account	credit book	trvl check	personal check	other	room charge	gift card	rain check	total
bc clothing		2	0.00	0.00	0.00	38.24	37.50	0.00	0.00	0.00	0.00	0.00	0.00	0.00	75.74
elite shirt ant		4	0.00	0.00	0.00	95.97	0.00	0.00	0.00	0.00	0.00	0.00	31.15	0.00	127.16
fj rpants		1	0.00	0.00	0.00	150.15	0.00	0.00	0.00	0.00	0.00	0.00	0.00	0.00	150.15
gtech-puma		2	0.00	0.00	0.00	77.00	0.00	0.00	0.00	0.00	0.00	0.00	0.00	0.00	77.00
hyphn lite		3	0.00	0.00	0.00	90.99	0.00	55.99	0.00	0.00	0.00	0.00	0.00	0.00	146.98
MarkA \$35 Skew		3	0.00	0.00	0.00	35.00	0.00	0.00	0.00	0.00	0.00	0.00	70.00	0.00	105.00
MarkA \$50 Skew		0	0.00	0.00	0.00	0.00	0.00	0.00	0.00	0.00	0.00	0.00	0.00	0.00	0.00
port authorityjacket		2	0.00	0.00	0.00	79.96	0.00	0.00	0.00	0.00	0.00	0.00	0.00	0.00	79.96
ProQuip1		2	0.00	0.00	0.00	71.99	0.00	67.49	0.00	0.00	0.00	0.00	0.00	0.00	139.48
ProQuip2		1	0.00	0.00	0.00	0.00	0.00	0.00	0.00	0.00	0.00	0.00	84.80	0.00	84.80
ProQuip3		1	0.00	0.00	0.00	0.00	95.99	0.00	0.00	0.00	0.00	0.00	0.00	0.00	95.99
puma shrts		6	0.00	0.00	0.00	296.84	0.00	0.00	0.00	0.00	0.00	0.00	13.86	0.00	310.70
socks puma		1	0.00	0.00	0.00	0.00	0.00	9.87	0.00	0.00	0.00	0.00	0.00	0.00	9.87
<b>Total: Clothing</b>		<b>28</b>	<b>0.00</b>	<b>0.00</b>	<b>0.00</b>	<b>936.14</b>	<b>133.49</b>	<b>133.35</b>	<b>0.00</b>	<b>0.00</b>	<b>0.00</b>	<b>0.00</b>	<b>199.85</b>	<b>0.00</b>	<b>1,402.83</b>
<b>Clubs</b>															
588 RTX-3		5	0.00	0.00	0.00	124.99	299.97	0.00	0.00	0.00	0.00	0.00	0.00	0.00	424.96
cal mac wdgs		3	0.00	0.00	0.00	359.97	0.00	0.00	0.00	0.00	0.00	0.00	0.00	0.00	359.97
Cleveland 588 RTX		1	0.00	0.00	0.00	0.00	0.00	122.49	0.00	0.00	0.00	0.00	0.00	0.00	122.49
Cleveland Clinic Wedge		21	213.50	0.00	0.00	1,937.67	0.00	85.44	0.00	0.00	0.00	0.00	0.00	0.00	2,236.61
epoch dr cal		1	0.00	0.00	0.00	439.99	0.00	0.00	0.00	0.00	0.00	0.00	0.00	0.00	439.99
g gwy demo		2	0.00	0.00	0.00	344.00	0.00	0.00	0.00	0.00	0.00	0.00	35.00	0.00	379.00
miscellaneous clubs		29	50.00	0.00	0.00	95.00	0.00	0.00	0.00	0.00	0.00	0.00	0.00	0.00	145.00



# Transaction Details by Pay Method Report

Washoe G.C.

From: 4/1/2017 12:00:00 AM

To: 4/30/2017 11:59:59 PM

Terminal name: PARKS005400,PARKS005518,PARKS005776

Category	item	qty	cash	amex	discover	credit card	mbr account	credit book	trvl check	personal check	other	room charge	gift card	rain check	total
	Ping G Driver	1	0.00	0.00	0.00	311.37	0.00	38.62	0.00	0.00	0.00	0.00	0.00	0.00	349.99
	rx ptr wht hot	3	0.00	135.99	0.00	167.78	0.00	0.00	0.00	0.00	0.00	0.00	111.40	0.00	415.17
	Srixon Z Driver	2	0.00	0.00	0.00	404.99	278.49	0.00	0.00	0.00	0.00	0.00	0.00	0.00	683.48
	Srixon Z Hybrid	1	0.00	0.00	0.00	206.99	0.00	0.00	0.00	0.00	0.00	0.00	0.00	0.00	206.99
	Srixon Z355 Driver	1	0.00	0.00	0.00	0.00	210.00	0.00	0.00	0.00	0.00	0.00	0.00	0.00	210.00
	Srixon Z355 Hybrid	1	0.00	0.00	0.00	159.99	0.00	0.00	0.00	0.00	0.00	0.00	0.00	0.00	159.99
	tr putters	1	114.39	0.00	0.00	0.00	0.00	0.00	0.00	0.00	0.00	0.00	0.00	0.00	114.39
	Used Club \$20	3	37.00	0.00	0.00	20.00	0.00	0.00	0.00	0.00	0.00	0.00	0.00	0.00	57.00
	vokey wedge	3	318.95	0.00	0.00	0.00	0.00	50.80	0.00	0.00	0.00	0.00	0.00	0.00	369.75
<b>Total:</b>	<b>Clubs</b>	<b>78</b>	<b>733.84</b>	<b>135.99</b>	<b>0.00</b>	<b>4,572.75</b>	<b>788.46</b>	<b>297.35</b>	<b>0.00</b>	<b>0.00</b>	<b>0.00</b>	<b>0.00</b>	<b>146.40</b>	<b>0.00</b>	<b>6,674.78</b>

## Gift Certificate

	Gift Card	24	200.00	0.00	0.00	500.00	925.00	0.00	0.00	350.00	0.00	0.00	50.00	0.00	2,025.00
<b>Total:</b>	<b>Gift Certificate</b>	<b>24</b>	<b>200.00</b>	<b>0.00</b>	<b>0.00</b>	<b>500.00</b>	<b>925.00</b>	<b>0.00</b>	<b>0.00</b>	<b>350.00</b>	<b>0.00</b>	<b>0.00</b>	<b>50.00</b>	<b>0.00</b>	<b>2,025.00</b>

## Gloves

	cal glvs	9	37.39	0.00	0.00	67.96	0.00	20.89	0.00	0.00	0.00	0.00	13.92	0.00	140.16
	HJ ALLSOFT GLOVE	15	75.73	0.00	0.00	110.52	0.00	0.00	0.00	0.00	0.00	0.00	13.92	0.00	200.17
	Srixon All Weather	6	12.99	0.00	0.00	38.97	0.00	25.92	0.00	0.00	0.00	0.00	0.00	0.00	77.88
	Srixon All Weather Issued	1	0.00	0.00	0.00	12.99	0.00	0.00	0.00	0.00	0.00	0.00	0.00	0.00	12.99
	tit p soft glv	9	16.99	0.00	0.00	15.29	0.00	50.97	0.00	0.00	0.00	0.00	58.61	0.00	141.86
	zero frict glvs	32	117.49	0.00	0.00	248.82	12.31	13.99	0.00	0.00	0.00	0.00	40.57	0.00	433.18

# Transaction Details by Pay Method Report

Washoe G.C.

From: 4/1/2017 12:00:00 AM

To: 4/30/2017 11:59:59 PM

Terminal name: PARKS005400,PARKS005518,PARKS005776

Category	item	qty	cash	amex	discover	credit card	mbr account	credit book	trvl check	personal check	other	room charge	gift card	rain check	total
<b>Total:</b>	<b>Gloves</b>	<b>72</b>	<b>260.59</b>	<b>0.00</b>	<b>0.00</b>	<b>494.55</b>	<b>12.31</b>	<b>111.77</b>	<b>0.00</b>	<b>0.00</b>	<b>0.00</b>	<b>0.00</b>	<b>127.02</b>	<b>0.00</b>	<b>1,006.24</b>
<b>Golf Bags</b>															
	cal bg cg bag	2	0.00	0.00	0.00	238.02	0.00	91.34	0.00	0.00	0.00	0.00	0.00	0.00	329.36
	ping golf4 series bag	0	0.00	0.00	0.00	0.00	0.00	0.00	0.00	0.00	0.00	0.00	0.00	0.00	0.00
<b>Total:</b>	<b>Golf Bags</b>	<b>2</b>	<b>0.00</b>	<b>0.00</b>	<b>0.00</b>	<b>238.02</b>	<b>0.00</b>	<b>91.34</b>	<b>0.00</b>	<b>0.00</b>	<b>0.00</b>	<b>0.00</b>	<b>0.00</b>	<b>0.00</b>	<b>329.36</b>
<b>Green Fees - Daily</b>															
	18-Hole summer Fee	236	1,548.94	198.00	0.00	5,979.10	0.00	0.00	0.00	0.00	0.00	0.00	61.97	0.00	7,788.00
	18-Hole Summer Junior	2	0.00	0.00	0.00	42.00	0.00	0.00	0.00	0.00	0.00	0.00	0.00	0.00	42.00
	18-Hole Summer Senior	427	2,866.17	243.00	0.00	8,087.87	0.00	0.00	0.00	81.00	0.00	0.00	250.96	0.00	11,529.00
	18-Hole Summer Senior Redeemed	1	0.00	0.00	0.00	27.00	0.00	0.00	0.00	0.00	0.00	0.00	0.00	0.00	27.00
	9 hole JR executive	20	77.00	0.00	0.00	143.00	0.00	0.00	0.00	0.00	0.00	0.00	0.00	0.00	220.00
	9 Hole Walk-up	27	66.00	0.00	0.00	528.00	0.00	0.00	0.00	0.00	0.00	0.00	0.00	0.00	594.00
	9 Hole Walk-up Jr	3	33.00	0.00	0.00	0.00	0.00	0.00	0.00	0.00	0.00	0.00	0.00	0.00	33.00
	9 Hole Walk-up Sr	237	1,104.00	112.00	0.00	2,544.00	0.00	0.00	0.00	32.00	0.00	0.00	0.00	0.00	3,792.00
	9-Hole Twilight Green Fee	655	3,072.00	128.00	0.00	7,024.00	0.00	0.00	0.00	24.73	0.00	0.00	231.27	0.00	10,480.00
	Late Rate Adult	469	2,334.89	330.00	0.00	6,573.54	0.00	0.00	0.00	943.11	0.00	0.00	136.46	0.00	10,318.00
	Late Rate Junior	39	121.00	0.00	0.00	264.00	0.00	0.00	0.00	44.00	0.00	0.00	0.00	0.00	429.00
	Late Rate Junior Redeemed	1	0.00	0.00	0.00	11.00	0.00	0.00	0.00	0.00	0.00	0.00	0.00	0.00	11.00
	Late Rate Senior	485	2,291.14	72.00	0.00	5,139.00	707.14	0.00	0.00	403.72	0.00	0.00	117.00	0.00	8,730.00
	Late Rate Senior Redeemed	1	0.00	0.00	0.00	18.00	0.00	0.00	0.00	0.00	0.00	0.00	0.00	0.00	18.00

# Transaction Details by Pay Method Report

Washoe G.C.
From: 4/1/2017 12:00:00 AM
To: 4/30/2017 11:59:59 PM

Terminal name: PARKS005400,PARKS005518,PARKS005776

Category	item	qty	cash	amex	discover	credit card	mbr account	credit book	trvl check	personal check	other	room charge	gift card	rain check	total
	Youth On Course	7	8.00	0.00	0.00	6.00	0.00	0.00	0.00	0.00	0.00	0.00	0.00	0.00	14.00
<b>Total: Green Fees - Daily</b>			<b>2610</b>	<b>13,522.14</b>	<b>1,083.00</b>	<b>0.00</b>	<b>36,386.51</b>	<b>707.14</b>	<b>0.00</b>	<b>1,528.55</b>	<b>0.00</b>	<b>0.00</b>	<b>797.66</b>	<b>0.00</b>	<b>54,025.00</b>
<b>Green Fees - Special</b>															
	Annual Golden	10	0.00	0.00	0.00	0.00	0.00	0.00	0.00	0.00	0.00	0.00	0.00	0.00	0.00
	Annual Junior	1	0.00	0.00	0.00	0.00	0.00	0.00	0.00	0.00	0.00	0.00	0.00	0.00	0.00
	Annual Regular	38	0.00	0.00	0.00	0.00	0.00	0.00	0.00	0.00	0.00	0.00	0.00	0.00	0.00
	Annual Senior	85	0.00	0.00	0.00	0.00	0.00	0.00	0.00	0.00	0.00	0.00	0.00	0.00	0.00
	Annual w/Cart	160	0.00	0.00	0.00	0.00	0.00	0.00	0.00	0.00	0.00	0.00	0.00	0.00	0.00
	County Donation Comp	4	0.00	0.00	0.00	0.00	0.00	0.00	0.00	0.00	0.00	0.00	0.00	0.00	0.00
	CT- 10 Play WALKING Redeemed	25	0.00	0.00	0.00	0.00	0.00	0.00	0.00	0.00	0.00	0.00	0.00	0.00	0.00
	CT- 10 Rounds w/Cart Issued	20	0.00	0.00	0.00	3,740.00	0.00	0.00	0.00	660.00	0.00	0.00	0.00	0.00	4,400.00
	CT- 10 Rounds w/Cart Redeemed	36	0.00	0.00	0.00	0.00	0.00	0.00	0.00	0.00	0.00	0.00	0.00	0.00	0.00
	CT- 5 Rounds w/Cart Issued	4	110.00	0.00	0.00	220.00	0.00	0.00	0.00	110.00	0.00	0.00	0.00	0.00	440.00
	CT- 5 Rounds w/Cart Redeemed	10	0.00	0.00	0.00	0.00	0.00	0.00	0.00	0.00	0.00	0.00	0.00	0.00	0.00
	Golf18Network PAID	88	0.00	0.00	0.00	0.00	0.00	0.00	0.00	0.00	0.00	0.00	0.00	0.00	0.00
	Groupon Offer	68	0.00	0.00	0.00	0.00	0.00	0.00	0.00	0.00	0.00	0.00	0.00	0.00	0.00
	Groupon Payment GREEN FEE	2	0.00	0.00	0.00	0.00	0.00	0.00	0.00	2,080.00	0.00	0.00	0.00	0.00	2,080.00
	High School	67	0.00	0.00	0.00	0.00	0.00	0.00	0.00	0.00	0.00	0.00	0.00	0.00	0.00
	Marshall Green Fee	13	0.00	0.00	0.00	0.00	0.00	0.00	0.00	0.00	0.00	0.00	0.00	0.00	0.00
	PGA Comp	19	0.00	0.00	0.00	0.00	0.00	0.00	0.00	0.00	0.00	0.00	0.00	0.00	0.00

# Transaction Details by Pay Method Report

Washoe G.C.

From: 4/1/2017 12:00:00 AM

To: 4/30/2017 11:59:59 PM

Terminal name: PARKS005400,PARKS005518,PARKS005776

Category	item	qty	cash	amex	discover	credit card	mbr account	credit book	trvl check	personal check	other	room charge	gift card	rain check	total
SC - Adult 10-Play	Issued	1	0.00	0.00	0.00	288.00	0.00	0.00	0.00	0.00	0.00	0.00	0.00	0.00	288.00
SC - Adult 10-Play	Redeemed	5	0.00	0.00	0.00	0.00	0.00	0.00	0.00	0.00	0.00	0.00	0.00	0.00	0.00
SC - Senior 10-Play	Issued	9	234.00	0.00	0.00	1,638.00	0.00	0.00	0.00	234.00	0.00	0.00	0.00	0.00	2,106.00
SC - Senior 10-Play	Redeemed	51	0.00	0.00	0.00	0.00	0.00	0.00	0.00	0.00	0.00	0.00	0.00	0.00	0.00
SC - Senior 25-Play	Issued	7	0.00	0.00	0.00	3,850.00	0.00	0.00	0.00	0.00	0.00	0.00	0.00	0.00	3,850.00
SC - Senior 25-Play	Redeemed	71	0.00	0.00	0.00	0.00	0.00	0.00	0.00	0.00	0.00	0.00	0.00	0.00	0.00
Senior Annual 9 Hole w/Cart		34	0.00	0.00	0.00	0.00	0.00	0.00	0.00	0.00	0.00	0.00	0.00	0.00	0.00
<b>Total: Green Fees - Special</b>		<b>828</b>	<b>344.00</b>	<b>0.00</b>	<b>0.00</b>	<b>9,736.00</b>	<b>0.00</b>	<b>0.00</b>	<b>0.00</b>	<b>3,084.00</b>	<b>0.00</b>	<b>0.00</b>	<b>0.00</b>	<b>0.00</b>	<b>13,164.00</b>
<b>Hats &amp; Caps</b>															
3d cap		1	0.00	0.00	0.00	22.99	0.00	0.00	0.00	0.00	0.00	0.00	0.00	0.00	22.99
ASSORTED CAPS		1	0.00	0.00	0.00	16.99	0.00	0.00	0.00	0.00	0.00	0.00	0.00	0.00	16.99
caps puma		1	19.54	0.00	0.00	0.00	0.00	0.00	0.00	0.00	0.00	0.00	0.00	0.00	19.54
cobra cr hat		1	0.00	0.00	0.00	16.99	0.00	0.00	0.00	0.00	0.00	0.00	0.00	0.00	16.99
hat ant		1	0.00	0.00	0.00	16.79	0.00	0.00	0.00	0.00	0.00	0.00	0.00	0.00	16.79
hats srixon		2	24.99	0.00	0.00	24.99	0.00	0.00	0.00	0.00	0.00	0.00	0.00	0.00	49.98
hwgcap		2	0.00	0.00	0.00	25.99	0.00	23.39	0.00	0.00	0.00	0.00	0.00	0.00	49.38
ping tour hat		2	0.00	0.00	0.00	53.57	0.00	0.06	0.00	0.00	0.00	0.00	0.00	0.00	53.63
Travis Mathew Hat		11	0.42	0.00	0.00	86.37	0.00	31.99	0.00	0.00	0.00	0.00	181.93	0.00	300.71
<b>Total: Hats &amp; Caps</b>		<b>22</b>	<b>44.95</b>	<b>0.00</b>	<b>0.00</b>	<b>264.68</b>	<b>0.00</b>	<b>55.44</b>	<b>0.00</b>	<b>0.00</b>	<b>0.00</b>	<b>0.00</b>	<b>181.93</b>	<b>0.00</b>	<b>547.00</b>

# Transaction Details by Pay Method Report

Washoe G.C.

From: 4/1/2017 12:00:00 AM

To: 4/30/2017 11:59:59 PM

Terminal name: PARKS005400,PARKS005518,PARKS005776

Category	item	qty	cash	amex	discover	credit card	mbr account	credit book	trvl check	personal check	other	room charge	gift card	rain check	total
<b>Lessons</b>															
	Cleveland Clinic GW \$15	1	0.00	0.00	0.00	15.00	0.00	0.00	0.00	0.00	0.00	0.00	0.00	0.00	15.00
	Cleveland Clinic GW \$20	19	40.00	0.00	0.00	340.00	0.00	0.00	0.00	0.00	0.00	0.00	0.00	0.00	380.00
	LESSONS- MIKE PAUL	3	0.00	0.00	0.00	200.00	0.00	0.00	0.00	0.00	0.00	0.00	0.00	0.00	200.00
	LESSONS-DARIN	6	0.00	370.00	0.00	390.00	0.00	0.00	0.00	60.00	0.00	0.00	0.00	0.00	820.00
	LESSONS-DARIN Issued	1	0.00	0.00	0.00	25.00	0.00	0.00	0.00	0.00	0.00	0.00	0.00	0.00	25.00
	Lessons-Greg Wenzel	5	0.00	0.00	0.00	150.00	0.00	0.00	0.00	150.00	0.00	0.00	0.00	0.00	300.00
	<b>Total: Lessons</b>	<b>35</b>	<b>40.00</b>	<b>370.00</b>	<b>0.00</b>	<b>1,120.00</b>	<b>0.00</b>	<b>0.00</b>	<b>0.00</b>	<b>210.00</b>	<b>0.00</b>	<b>0.00</b>	<b>0.00</b>	<b>0.00</b>	<b>1,740.00</b>
<b>Miscellaneous</b>															
	10-TEES	50	32.00	1.00	0.00	12.00	0.00	2.00	0.00	1.00	0.00	0.00	2.00	0.00	50.00
	CHAPSTICK	2	1.80	0.00	0.00	2.25	0.00	0.00	0.00	0.00	0.00	0.00	0.00	0.00	4.05
	grips	58	25.00	0.00	0.00	455.99	0.00	70.00	0.00	0.00	0.00	0.00	0.00	0.00	550.99
	Smart Card - Enter Type	2	0.00	0.00	0.00	0.00	0.00	0.00	0.00	0.00	0.00	0.00	0.00	0.00	0.00
	Smart Card - Enter Type Issued	1	0.00	0.00	0.00	0.00	0.00	0.00	0.00	0.00	0.00	0.00	0.00	0.00	0.00
	Smart Card - Enter Type Redeemed	101	0.00	0.00	0.00	0.00	0.00	0.00	0.00	0.00	0.00	0.00	0.00	0.00	0.00
	<b>Total: Miscellaneous</b>	<b>214</b>	<b>58.80</b>	<b>1.00</b>	<b>0.00</b>	<b>470.24</b>	<b>0.00</b>	<b>72.00</b>	<b>0.00</b>	<b>1.00</b>	<b>0.00</b>	<b>0.00</b>	<b>2.00</b>	<b>0.00</b>	<b>605.04</b>
<b>Payment</b>															
	Pay On Account	27	238.25	550.00	0.00	2,585.41	0.00	32.00	0.00	5,050.00	0.00	0.00	300.00	0.00	8,755.66
	<b>Total: Payment</b>	<b>27</b>	<b>238.25</b>	<b>550.00</b>	<b>0.00</b>	<b>2,585.41</b>	<b>0.00</b>	<b>32.00</b>	<b>0.00</b>	<b>5,050.00</b>	<b>0.00</b>	<b>0.00</b>	<b>300.00</b>	<b>0.00</b>	<b>8,755.66</b>

# Transaction Details by Pay Method Report

Washoe G.C. From: 4/1/2017 12:00:00 AM To: 4/30/2017 11:59:59 PM

Terminal name: PARKS005400,PARKS005518,PARKS005776

Category	item:	qty	cast:	amex	discover	credit card	mbr account	credit book	trvl check	personal check	other	room charge	gift card	rain check	total
<b>Range</b>															
	\$20 Range Card	8	120.00	0.00	0.00	40.00	0.00	0.00	0.00	0.00	0.00	0.00	0.00	0.00	160.00
	LARGE RANGE	370	1,784.92	30.00	0.00	1,580.00	0.00	0.00	0.00	230.08	0.00	0.00	75.00	0.00	3,700.00
	MED RANGE	405	1,786.74	14.00	0.00	980.00	0.00	0.00	0.00	5.26	0.00	0.00	49.00	0.00	2,835.00
	MED RANGE Redeemed	1	7.00	0.00	0.00	0.00	0.00	0.00	0.00	0.00	0.00	0.00	0.00	0.00	7.00
	SC - Annual Range Pass Redeemed	34	0.00	0.00	0.00	0.00	0.00	0.00	0.00	0.00	0.00	0.00	0.00	0.00	0.00
	SC - LARGE RANGE Redeemed	2	0.00	0.00	0.00	0.00	0.00	0.00	0.00	0.00	0.00	0.00	0.00	0.00	0.00
	SC - MED RANGE Redeemed	5	0.00	0.00	0.00	0.00	0.00	0.00	0.00	0.00	0.00	0.00	0.00	0.00	0.00
	SC - SMALL RANGE Issued	2	35.00	0.00	0.00	35.00	0.00	0.00	0.00	0.00	0.00	0.00	0.00	0.00	70.00
	SC - SMALL RANGE Redeemed	4	0.00	0.00	0.00	0.00	0.00	0.00	0.00	0.00	0.00	0.00	0.00	0.00	0.00
	SMALL RANGE	416	816.49	12.00	0.00	644.00	0.00	0.00	0.00	183.51	0.00	0.00	8.00	0.00	1,664.00
	SMALL RANGE Issued	1	4.00	0.00	0.00	0.00	0.00	0.00	0.00	0.00	0.00	0.00	0.00	0.00	4.00
	SMALL RANGE Redeemed	1	4.00	0.00	0.00	0.00	0.00	0.00	0.00	0.00	0.00	0.00	0.00	0.00	4.00
<b>Total: Range</b>		<b>1249</b>	<b>4,558.14</b>	<b>56.00</b>	<b>0.00</b>	<b>3,279.00</b>	<b>0.00</b>	<b>0.00</b>	<b>0.00</b>	<b>418.86</b>	<b>0.00</b>	<b>0.00</b>	<b>132.00</b>	<b>0.00</b>	<b>8,444.00</b>
<b>Rental</b>															
	RENTAL CLUBS 9-HOLES STL	28	22.00	33.00	0.00	253.00	0.00	0.00	0.00	0.00	0.00	0.00	0.00	0.00	308.00
	RENTAL CLUBS 18-HOLES STL	8	44.00	0.00	0.00	132.00	0.00	0.00	0.00	0.00	0.00	0.00	0.00	0.00	176.00
<b>Total: Rental</b>		<b>36</b>	<b>66.00</b>	<b>33.00</b>	<b>0.00</b>	<b>385.00</b>	<b>0.00</b>	<b>0.00</b>	<b>0.00</b>	<b>0.00</b>	<b>0.00</b>	<b>0.00</b>	<b>0.00</b>	<b>0.00</b>	<b>484.00</b>

# Transaction Details by Pay Method Report

Washoe G.C.

From: 4/1/2017 12:00:00 AM

To: 4/30/2017 11:59:59 PM

Terminal name: PARKS005400,PARKS005518,PARKS005776

Category	item	qty	cash	amex	discover	credit card	mbr account	credit book	trvl check	personal check	other	room charge	gift card	rain check	total
	club repair	1	6.00	0.00	0.00	0.00	0.00	0.00	0.00	0.00	0.00	0.00	0.00	0.00	6.00
<b>Total:</b>	<b>Repairs</b>	<b>1</b>	<b>6.00</b>	<b>0.00</b>	<b>0.00</b>	<b>0.00</b>	<b>0.00</b>	<b>0.00</b>	<b>0.00</b>	<b>0.00</b>	<b>0.00</b>	<b>0.00</b>	<b>0.00</b>	<b>0.00</b>	<b>6.00</b>

## Shoes

ad climawmns	1	0.00	0.00	0.00	0.00	87.99	0.00	0.00	0.00	0.00	0.00	0.00	0.00	0.00	87.99
ad trax shoes	1	0.00	0.00	0.00	0.00	0.00	0.00	79.99	0.00	0.00	0.00	0.00	0.00	0.00	79.99
drive skchers	2	52.28	0.00	0.00	0.00	89.99	0.00	27.71	0.00	0.00	0.00	0.00	0.00	0.00	169.98
fj cas wmn	3	0.00	0.00	0.00	0.00	143.98	0.00	69.29	0.00	0.00	0.00	0.00	0.00	0.00	213.27
golwalk skchrs	4	71.99	0.00	0.00	0.00	143.98	0.00	0.00	0.00	0.00	0.00	0.00	71.99	0.00	287.96
newb shoes	2	0.00	0.00	0.00	0.00	82.49	0.00	0.00	0.00	0.00	0.00	0.00	87.99	0.00	170.48
puma igtnt shoes	2	0.00	0.00	0.00	0.00	87.99	0.00	97.47	0.00	0.00	0.00	0.00	0.00	0.00	185.46
puma igtnt shoes Redeemed	1	0.00	0.00	0.00	0.00	87.99	0.00	0.00	0.00	0.00	0.00	0.00	0.00	0.00	87.99
pums snyft	2	0.00	0.00	0.00	0.00	79.99	0.00	0.00	0.00	0.00	0.00	0.00	79.99	0.00	159.98
wmn new b shoes	2	0.00	0.00	0.00	0.00	133.52	0.00	26.46	0.00	0.00	0.00	0.00	0.00	0.00	159.98
<b>Total:</b>	<b>Shoes</b>	<b>20</b>	<b>124.27</b>	<b>0.00</b>	<b>0.00</b>	<b>937.92</b>	<b>0.00</b>	<b>300.92</b>	<b>0.00</b>	<b>0.00</b>	<b>0.00</b>	<b>0.00</b>	<b>239.97</b>	<b>0.00</b>	<b>1,603.08</b>

## Snack Bar

\$4 Well	196	436.00	0.00	12.00	0.00	336.00	0.00	0.00	0.00	0.00	0.00	0.00	0.00	0.00	784.00
1/2 Order Hot Wings	1	0.00	0.00	0.00	0.00	7.50	0.00	0.00	0.00	0.00	0.00	0.00	0.00	0.00	7.50
1/2 Sandwich Soup or Salad	3	15.43	0.00	0.00	0.00	8.00	0.00	0.00	0.00	0.00	0.00	0.00	0.00	0.00	23.43
2 eggs, potato, toast MEAT	30	51.88	29.60	0.00	0.00	140.86	0.00	0.00	0.00	0.00	0.00	0.00	0.00	0.00	222.34

# Transaction Details by Pay Method Report

Washoe G.C.

From: 4/1/2017 12:00:00 AM

To: 4/30/2017 11:59:59 PM

Terminal name: PARKS005400,PARKS005518,PARKS005776

Category	item	qty	cash	amex	discover	credit card	mbr account	credit book	trvl check	personal check	other	room charge	gift card	rain check	total
2	for 1 Domestic Draft	8	25.50	0.00	0.00	8.50	0.00	0.00	0.00	0.00	0.00	0.00	0.00	0.00	34.00
2	for 1 Premium Draft	15	33.00	0.00	0.00	49.50	0.00	0.00	0.00	0.00	0.00	0.00	0.00	0.00	82.50
	Angry Orchard	2	0.00	0.00	0.00	8.00	0.00	0.00	0.00	0.00	0.00	0.00	0.00	0.00	8.00
	Bike Night Button	41	251.00	0.00	0.00	50.25	0.00	0.00	0.00	0.00	0.00	0.00	0.00	0.00	301.25
	Bloody Mary	99	184.00	4.00	0.00	168.00	0.00	0.00	0.00	0.00	0.00	0.00	0.00	0.00	356.00
	BLT Sandwich	6	0.00	0.00	0.00	53.35	0.00	0.00	0.00	0.00	0.00	0.00	0.00	0.00	53.35
	Blue Moon	21	40.00	0.00	0.00	44.00	0.00	0.00	0.00	0.00	0.00	0.00	0.00	0.00	84.00
	Boddington Beer	12	30.00	0.00	0.00	30.00	0.00	0.00	0.00	0.00	0.00	0.00	0.00	0.00	60.00
	Bottled Soda	127	231.25	2.50	0.00	82.50	0.00	0.00	0.00	0.00	0.00	0.00	0.00	0.00	316.25
	Bottled Water Regular	229	233.00	13.50	0.00	93.00	0.00	0.00	0.00	3.00	0.00	0.00	0.00	0.00	342.50
	Breakfast Sandwich	58	178.35	4.64	0.00	83.40	0.00	0.00	0.00	0.00	0.00	0.00	0.00	0.00	266.39
	btledstarbucks	4	9.99	0.00	0.00	0.00	0.00	0.00	0.00	0.00	0.00	0.00	0.00	0.00	9.99
	Bud	94	196.00	0.00	0.00	122.50	0.00	0.00	0.00	5.25	0.00	0.00	0.00	0.00	323.75
	Bud Light	165	296.45	42.00	0.00	236.53	0.00	0.00	0.00	0.00	0.00	0.00	1.47	0.00	576.45
	Buffalo Hot Wings	7	29.28	0.00	0.00	40.00	0.00	0.00	0.00	0.00	0.00	0.00	0.00	0.00	69.28
	Burrito Grande	24	92.40	8.35	0.00	104.75	0.00	0.00	0.00	0.00	0.00	0.00	0.00	0.00	205.50
	Caesar Salad	1	0.00	0.00	0.00	7.00	0.00	0.00	0.00	0.00	0.00	0.00	0.00	0.00	7.00
	Call Liquor	181	375.00	30.00	10.00	485.00	0.00	0.00	0.00	0.00	0.00	0.00	0.00	0.00	900.00
	Call Premium	238	576.00	24.00	6.00	816.00	0.00	0.00	0.00	0.00	0.00	0.00	0.00	0.00	1,422.00
	Candy Bar	306	320.02	1.50	0.00	108.00	0.00	0.00	0.00	0.00	0.00	0.00	3.00	0.00	432.52
	Cheese	20	10.00	0.00	0.00	10.00	0.00	0.00	0.00	0.00	0.00	0.00	0.00	0.00	20.00
	Cheese Omelette	6	8.35	0.00	0.00	41.68	0.00	0.00	0.00	0.00	0.00	0.00	0.00	0.00	50.03



# Transaction Details by Pay Method Report

Washoe G.C.

From: 4/1/2017 12:00:00 AM

To: 4/30/2017 11:59:59 PM

Terminal name: PARKS005400,PARKS005518,PARKS005776

Category	item	qty	cash	amex	discover	credit card	mbr account	credit book	trvl check	personal check	other	room charge	gift card	rain check	total
	Cheese Quesadilla	1	0.00	0.00	0.00	7.39	0.00	0.00	0.00	0.00	0.00	0.00	0.00	0.00	7.39
	Chicken Caesar Salad	2	0.00	0.00	0.00	18.58	0.00	0.00	0.00	0.00	0.00	0.00	0.00	0.00	18.58
	Chicken Caesar Wrap	8	34.70	0.00	0.00	35.35	0.00	0.00	0.00	0.00	0.00	0.00	0.00	0.00	70.05
	Chicken Fingers w/Fries	13	26.35	27.00	0.00	63.00	0.00	0.00	0.00	0.00	0.00	0.00	0.00	0.00	116.35
	Chicken Quesadilla	1	9.28	0.00	0.00	0.00	0.00	0.00	0.00	0.00	0.00	0.00	0.00	0.00	9.28
	Chili Bowl	1	4.64	0.00	0.00	0.00	0.00	0.00	0.00	0.00	0.00	0.00	0.00	0.00	4.64
	Chinese Chicken Salad	4	37.13	0.00	0.00	0.00	0.00	0.00	0.00	0.00	0.00	0.00	0.00	0.00	37.13
	Chips	71	64.50	0.00	0.00	39.00	0.00	0.00	0.00	0.00	0.00	0.00	0.00	0.00	103.50
	Chips and Salsa	1	5.00	0.00	0.00	0.00	0.00	0.00	0.00	0.00	0.00	0.00	0.00	0.00	5.00
	Club House	9	19.28	10.00	0.00	57.84	0.00	0.00	0.00	0.00	0.00	0.00	0.00	0.00	87.12
	Club Wrap	1	0.00	0.00	0.00	9.00	0.00	0.00	0.00	0.00	0.00	0.00	0.00	0.00	9.00
	cmn bars	1	2.00	0.00	0.00	0.00	0.00	0.00	0.00	0.00	0.00	0.00	0.00	0.00	2.00
	Cobb Salad	3	20.00	0.00	0.00	10.00	0.00	0.00	0.00	0.00	0.00	0.00	0.00	0.00	30.00
	Cocktail Upcharge	19	10.00	0.00	0.00	8.00	0.00	0.00	0.00	0.00	0.00	0.00	1.00	0.00	19.00
	Coffee	70	86.00	4.00	0.00	48.00	0.00	0.00	0.00	0.00	0.00	0.00	0.00	0.00	136.00
	Coors	127	112.00	0.00	0.00	329.00	0.00	0.00	0.00	0.00	0.00	0.00	0.00	0.00	441.00
	Coors 16 OZ	4	10.00	0.00	0.00	10.00	0.00	0.00	0.00	0.00	0.00	0.00	0.00	0.00	20.00
	Coors Light	478	644.00	10.50	0.00	977.05	0.00	0.00	0.00	23.10	0.00	0.00	2.95	0.00	1,657.60
	Coors Light 16 OZ	86	175.00	10.00	0.00	235.00	0.00	0.00	0.00	5.00	0.00	0.00	0.00	0.00	425.00
	Corona	53	189.00	0.00	0.00	40.50	0.00	0.00	0.00	4.50	0.00	0.00	0.00	0.00	234.00
	Daily Breakfast Special	11	46.28	0.00	0.00	18.00	0.00	0.00	0.00	0.00	0.00	0.00	0.00	0.00	64.28
	Danish/Muffin	2	2.00	2.00	0.00	0.00	0.00	0.00	0.00	0.00	0.00	0.00	0.00	0.00	4.00

# Transaction Details by Pay Method Report

Washoe G.C.

From: 4/1/2017 12:00:00 AM

To: 4/30/2017 11:59:59 PM

Terminal name: PARKS005400,PARKS005518,PARKS005776

Category	item	qty	cash	amex	discover	credit card	mbr account	credit book	trvl check	personal check	other	room charge	gift card	rain check	total
Deli	Sandwich Combo	22	45.15	23.43	0.00	99.41	0.00	0.00	0.00	0.00	0.00	0.00	0.00	0.00	167.99
Domestic	3 Pack Discount	35	-30.00	-1.50	0.00	-21.00	0.00	0.00	0.00	0.00	0.00	0.00	0.00	0.00	-52.50
Domestic	6 Pack Discount	77	-105.00	-25.00	0.00	-255.00	0.00	0.00	0.00	0.00	0.00	0.00	0.00	0.00	-385.00
Draft	Domestic	50	174.25	0.00	0.00	34.00	0.00	0.00	0.00	3.25	0.00	0.00	0.00	0.00	211.50
Employee	Meal	125	323.00	0.00	0.00	300.00	0.00	-0.00	0.00	0.00	0.00	0.00	0.00	0.00	623.00
energy		1	0.00	0.00	0.00	2.77	0.00	0.00	0.00	0.00	0.00	0.00	0.00	0.00	2.77
Ferrari	Carano Chardonnay BOTTLE	1	16.99	0.00	0.00	0.00	0.00	0.00	0.00	0.00	0.00	0.00	0.00	0.00	16.99
Ferrari	Carano Chardonnay GLASS	2	16.00	0.00	0.00	0.00	0.00	0.00	0.00	0.00	0.00	0.00	0.00	0.00	16.00
Ferrari	Carano Siena BOTTLE	13	210.79	0.00	0.00	12.94	0.00	0.00	0.00	0.00	0.00	0.00	0.00	0.00	223.73
Fountain	Soda	243	436.25	10.00	0.00	157.50	0.00	0.00	0.00	0.00	0.00	0.00	0.00	0.00	603.75
French	Toast	2	8.00	0.00	0.00	8.00	0.00	0.00	0.00	0.00	0.00	0.00	0.00	0.00	16.00
Fries	Platter	2	9.29	0.00	0.00	0.00	0.00	0.00	0.00	0.00	0.00	0.00	0.00	0.00	9.29
Fruit	Cup	3	0.00	0.00	0.00	5.58	0.00	0.00	0.00	0.00	0.00	0.00	0.00	0.00	5.58
Gatorade		206	300.75	2.50	0.00	202.50	0.00	0.00	0.00	0.00	0.00	0.00	0.00	0.00	505.75
Granola	Bar	25	17.50	1.00	0.00	5.00	0.00	0.00	0.00	0.00	0.00	0.00	0.00	0.00	23.50
Great Basin	Icky IPA	28	103.50	0.00	0.00	22.50	0.00	0.00	0.00	0.00	0.00	0.00	0.00	0.00	126.00
Grilled	Cheese	2	6.50	0.00	0.00	7.00	0.00	0.00	0.00	0.00	0.00	0.00	0.00	0.00	13.50
Grilled	Cheese w/Ham	4	18.00	0.00	0.00	18.00	0.00	0.00	0.00	0.00	0.00	0.00	0.00	0.00	36.00
Grilled	Chicken Breast	6	48.56	0.00	0.00	10.00	0.00	0.00	0.00	0.00	0.00	0.00	0.00	0.00	58.56
Guinness		9	32.00	0.00	0.00	16.50	0.00	0.00	0.00	0.00	0.00	0.00	0.00	0.00	48.50
Hamburger	Combo Meal	33	124.06	0.00	0.00	158.12	0.00	0.00	0.00	0.00	0.00	0.00	8.35	0.00	290.53

# Transaction Details by Pay Method Report

Washoe G.C.

From: 4/1/2017 12:00:00 AM

To: 4/30/2017 11:59:59 PM

Terminal name: PARKS005400,PARKS005518,PARKS005776

Category	item	qty	cash	amex	discover	credit card	mbr account	credit book	trvl check	personal check	other	room charge	gift card	rain check	total
	Happy Hour \$1 OFF	933	-514.00	-1.00	0.00	-418.00	0.00	0.00	0.00	0.00	0.00	0.00	0.00	0.00	-933.00
	Hashbrowns	1	0.00	0.00	0.00	2.78	0.00	0.00	0.00	0.00	0.00	0.00	0.00	0.00	2.78
	Heineken	17	54.00	0.00	0.00	18.00	0.00	0.00	0.00	2.25	0.00	0.00	0.00	0.00	74.25
	Hot Dog Add: Bacon, Chili, Avacado	4	1.85	0.00	0.00	1.47	0.00	0.00	0.00	0.00	0.00	0.00	0.39	0.00	3.71
	Hot Dog Meal + Med Bucket	2	16.00	0.00	0.00	0.00	0.00	0.00	0.00	0.00	0.00	0.00	0.00	0.00	16.00
	Hotdog	321	755.58	31.50	0.00	586.08	0.00	0.00	0.00	0.00	0.00	0.00	6.16	0.00	1,379.32
	House Wine Red	7	21.25	0.00	0.00	8.50	0.00	0.00	0.00	0.00	0.00	0.00	0.00	0.00	29.75
	House Wine White	27	76.50	0.00	0.00	38.25	0.00	0.00	0.00	0.00	0.00	0.00	0.00	0.00	114.75
	Import 3 Pack Discount	28	-42.00	0.00	0.00	-40.74	0.00	0.00	0.00	0.00	0.00	0.00	-1.26	0.00	-84.00
	Import 6 Pack Discount	23	-66.00	-6.00	0.00	-66.00	0.00	0.00	0.00	0.00	0.00	0.00	0.00	0.00	-138.00
	Juice	13	12.00	0.00	0.00	14.00	0.00	0.00	0.00	0.00	0.00	0.00	0.00	0.00	26.00
	Lagunitas Can	27	31.50	4.50	0.00	85.50	0.00	0.00	0.00	0.00	0.00	0.00	0.00	0.00	121.50
	Lunch Special 1/2 Order	2	6.50	0.00	0.00	6.50	0.00	0.00	0.00	0.00	0.00	0.00	0.00	0.00	13.00
	Lunch Special Full	14	64.84	0.00	0.00	64.89	0.00	0.00	0.00	0.00	0.00	0.00	0.00	0.00	129.73
	mag bullet	6	13.50	0.00	0.00	13.50	0.00	0.00	0.00	0.00	0.00	0.00	0.00	0.00	27.00
	Margarita	14	0.00	0.00	0.00	70.00	0.00	0.00	0.00	0.00	0.00	0.00	0.00	0.00	70.00
	Meiomi GLASS	13	48.00	0.00	0.00	30.00	0.00	0.00	0.00	0.00	0.00	0.00	0.00	0.00	78.00
	MGD	35	31.50	63.00	0.00	28.00	0.00	0.00	0.00	0.00	0.00	0.00	0.00	0.00	122.50
	Milk Shake	6	9.25	0.00	0.00	18.56	0.00	0.00	0.00	0.00	0.00	0.00	0.00	0.00	27.82
	Miller Lite	64	115.50	0.00	0.00	108.50	0.00	0.00	0.00	0.00	0.00	0.00	0.00	0.00	224.00
	Modelo	34	78.75	0.00	0.00	48.75	0.00	0.00	0.00	0.00	0.00	0.00	0.00	0.00	127.50
	newcastle	2	9.00	0.00	0.00	0.00	0.00	0.00	0.00	0.00	0.00	0.00	0.00	0.00	9.00

# Transaction Details by Pay Method Report

Washoe G.C.

From: 4/1/2017 12:00:00 AM

To: 4/30/2017 11:59:59 PM

Terminal name: PARKS005400,PARKS005518,PARKS005776

Category	item	qty	cash	amex	discover	credit card	mbr account	credit book	trvl check	personal check	other	room charge	gift card	rain check	total
Oatmeal		1	0.00	0.00	0.00	2.78	0.00	0.00	0.00	0.00	0.00	0.00	0.00	0.00	2.78
Odouls		5	17.50	0.00	0.00	0.00	0.00	0.00	0.00	0.00	0.00	0.00	0.00	0.00	17.50
OM Add:	Ham, Bacon, Sausage 2	2	0.00	0.00	0.00	1.86	0.00	0.00	0.00	0.00	0.00	0.00	0.00	0.00	1.86
Onion Rings		1	0.00	0.00	0.00	7.42	0.00	0.00	0.00	0.00	0.00	0.00	0.00	0.00	7.42
Pabst Blue Ribbon		102	222.00	0.00	0.00	84.00	0.00	0.00	0.00	0.00	0.00	0.00	0.00	0.00	306.00
Patty Melt		3	10.00	0.00	0.00	20.00	0.00	0.00	0.00	0.00	0.00	0.00	0.00	0.00	30.00
Peanuts		23	22.00	0.00	0.00	12.00	0.00	0.00	0.00	0.00	0.00	0.00	0.00	0.00	34.00
Philly Cheese Steak		5	9.28	0.00	0.00	30.00	0.00	0.00	0.00	0.00	0.00	0.00	10.00	0.00	49.28
Power Bar		37	67.50	5.00	0.00	17.50	0.00	0.00	0.00	0.00	0.00	0.00	0.00	0.00	90.00
Premium Draft		342	968.00	11.00	0.00	897.37	0.00	0.00	0.00	0.00	0.00	0.00	4.63	0.00	1,881.00
Premium Pitcher		31	221.00	0.00	0.00	182.00	0.00	0.00	0.00	0.00	0.00	0.00	0.00	0.00	403.00
Red Bull		53	138.95	0.00	0.00	35.00	0.00	0.00	0.00	0.00	0.00	0.00	0.00	0.00	173.95
Sapporo		7	31.50	0.00	0.00	12.00	0.00	0.00	0.00	0.00	0.00	0.00	0.00	0.00	43.50
Side: 1 egg		13	6.47	0.00	0.00	5.57	0.00	0.00	0.00	0.00	0.00	0.00	0.00	0.00	12.04
Sierra Nevada		131	220.50	27.00	0.00	333.00	0.00	0.00	0.00	5.40	0.00	0.00	0.00	0.00	585.90
Small House Salad		5	13.92	0.00	0.00	9.23	0.00	0.00	0.00	0.00	0.00	0.00	0.00	0.00	23.15
Soup Bowl		21	83.40	0.00	0.00	13.92	0.00	0.00	0.00	0.00	0.00	0.00	0.00	0.00	97.32
Soup Cup		14	33.32	0.00	0.00	18.50	0.00	0.00	0.00	0.00	0.00	0.00	0.00	0.00	51.82
spark water		2	3.00	0.00	0.00	0.00	0.00	0.00	0.00	0.00	0.00	0.00	0.00	0.00	3.00
Stella Artois		34	48.50	0.00	0.00	120.00	0.00	0.00	0.00	0.00	0.00	0.00	0.00	0.00	168.50
Taco Salad		2	10.00	0.00	0.00	9.28	0.00	0.00	0.00	0.00	0.00	0.00	0.00	0.00	19.28
Tacos		1	0.00	0.00	0.00	9.00	0.00	0.00	0.00	0.00	0.00	0.00	0.00	0.00	9.00

# Transaction Details by Pay Method Report

Washoe G.C.

From: 4/1/2017 12:00:00 AM

To: 4/30/2017 11:59:59 PM

Terminal name: PARKS005400,PARKS005518,PARKS005776

Category	item	qty	cash	amex	discover	credit card	mbr account	credit book	trvl check	personal check	other	room charge	gift card	rain check	total
	Tea or Chocolate	18	28.00	0.00	0.00	8.00	0.00	0.00	0.00	0.00	0.00	0.00	0.00	0.00	36.00
	Tecate	26	71.50	0.00	0.00	9.75	0.00	0.00	0.00	0.00	0.00	0.00	3.25	0.00	84.50
	Toast or English Muff	5	5.56	0.00	0.00	3.72	0.00	0.00	0.00	0.00	0.00	0.00	0.00	0.00	9.28
	Top Shelf	2	0.00	0.00	0.00	18.00	0.00	0.00	0.00	0.00	0.00	0.00	0.00	0.00	18.00
	Tri Tip Dip	9	40.00	0.00	0.00	47.85	0.00	0.00	0.00	0.00	0.00	0.00	0.00	0.00	87.85
	Turkey/Tuna Melt	14	86.41	0.00	0.00	45.00	0.00	0.00	0.00	0.00	0.00	0.00	0.00	0.00	131.41
	Ultra Premium	132	385.00	49.00	14.00	476.00	0.00	0.00	0.00	0.00	0.00	0.00	0.00	0.00	924.00
	Wente BOTTLE	12	151.20	0.00	0.00	0.00	0.00	0.00	0.00	0.00	0.00	0.00	0.00	0.00	151.20
	<b>Total: Snack Bar</b>	<b>6385</b>	<b>10,493.69</b>	<b>418.02</b>	<b>42.00</b>	<b>8,871.14</b>	<b>0.00</b>	<b>0.00</b>	<b>0.00</b>	<b>51.75</b>	<b>0.00</b>	<b>0.00</b>	<b>39.94</b>	<b>0.00</b>	<b>19,916.54</b>

## SOCKS

	assorted	2	13.20	0.00	0.00	0.00	0.00	0.00	0.00	0.00	0.00	0.00	0.00	0.00	13.20
	<b>Total: SOCKS</b>	<b>2</b>	<b>13.20</b>	<b>0.00</b>	<b>0.00</b>	<b>0.00</b>	<b>0.00</b>	<b>0.00</b>	<b>0.00</b>	<b>0.00</b>	<b>0.00</b>	<b>0.00</b>	<b>0.00</b>	<b>0.00</b>	<b>13.20</b>

## Tournament RMGC RWGC Club Prizes

	RMGC Tourn Prizes	6	970.00	0.00	0.00	0.00	4,800.00	0.00	0.00	1,000.00	0.00	0.00	0.00	0.00	6,770.00
	RWGC Tourn Prizes	6	138.00	0.00	0.00	0.00	421.00	0.00	0.00	0.00	0.00	0.00	0.00	0.00	559.00
	RWGC Tourn Prizes Issued	1	0.00	0.00	0.00	40.00	0.00	0.00	0.00	0.00	0.00	0.00	0.00	0.00	40.00
	<b>Total: Tournament RMGC RWGC Club Prizes</b>	<b>13</b>	<b>1,108.00</b>	<b>0.00</b>	<b>0.00</b>	<b>40.00</b>	<b>5,221.00</b>	<b>0.00</b>	<b>0.00</b>	<b>1,000.00</b>	<b>0.00</b>	<b>0.00</b>	<b>0.00</b>	<b>0.00</b>	<b>7,369.00</b>

## Towels

	towels db	2	35.18	0.00	0.00	0.00	0.00	0.00	0.00	0.00	0.00	0.00	0.00	0.00	35.18
--	-----------	---	-------	------	------	------	------	------	------	------	------	------	------	------	-------

# Transaction Details by Pay Method Report

Washoe G.C.

From: 4/1/2017 12:00:00 AM

To: 4/30/2017 11:59:59 PM

Terminal name: PARKS005400,PARKS005518,PARKS005776

Category	item	qty	cash	amex	discover	credit card	mbr account	credit book	trvl check	personal check	other	room charge	gift card	rain check	total
Total:	Towels	2	35.18	0.00	0.00	0.00	0.00	0.00	0.00	0.00	0.00	0.00	0.00	0.00	35.18
	total:	14806	41,810.25	3,239.49	42.00	96,197.22	9,728.25	1,188.96	0.00	19,700.30	0.00	0.00	3,083.89	0.00	174,990.37
	total tax:	14806	265.73	19.26	0.00	760.05	33.52	81.58	0.00	0.00	0.00	0.00	73.47	0.00	1,233.60
	total tip:	14806	0.00	51.00	5.00	1,691.03	0.00	0.00	0.00	0.00	0.00	0.00	0.00	0.00	1,747.03
	Grand total:	14806	42,075.98	3,309.75	47.00	98,648.30	9,761.77	1,270.54	0.00	19,700.30	0.00	0.00	3,157.36	0.00	177,971.00

note: the distribution of payment amounts being equally distributed among payment methods may result in fractured numbers. this report is rounded to the nearest cent.

# Wilbur D. May Museum Report

## Highlights

- The Museum installed and opened a new art exhibition from Sierra Watercolor Society. The show, titled "Honoring Mother Nature," features dozens of watercolor paintings with a botanical theme.
- The Museum hosted the annual Art Angels workshop. 50 children ages 6-12 came for an afternoon of free watercolor painting lessons, taught by artists from Sierra Watercolor Society.

## Future

- The Sierra Watercolor Society exhibition will close on Sunday, June 4.
- A new art exhibition will be installed on June 17. The show, titled "New Directions," features fiber and fabric works from a group of female artists from California. This will be their first exhibition as a collective. The show will open with a special reception.
- The Museum will participate in #MuseumWeek on Twitter, June 19-25. Each day features special topics and themes to highlight the museum and its collection.